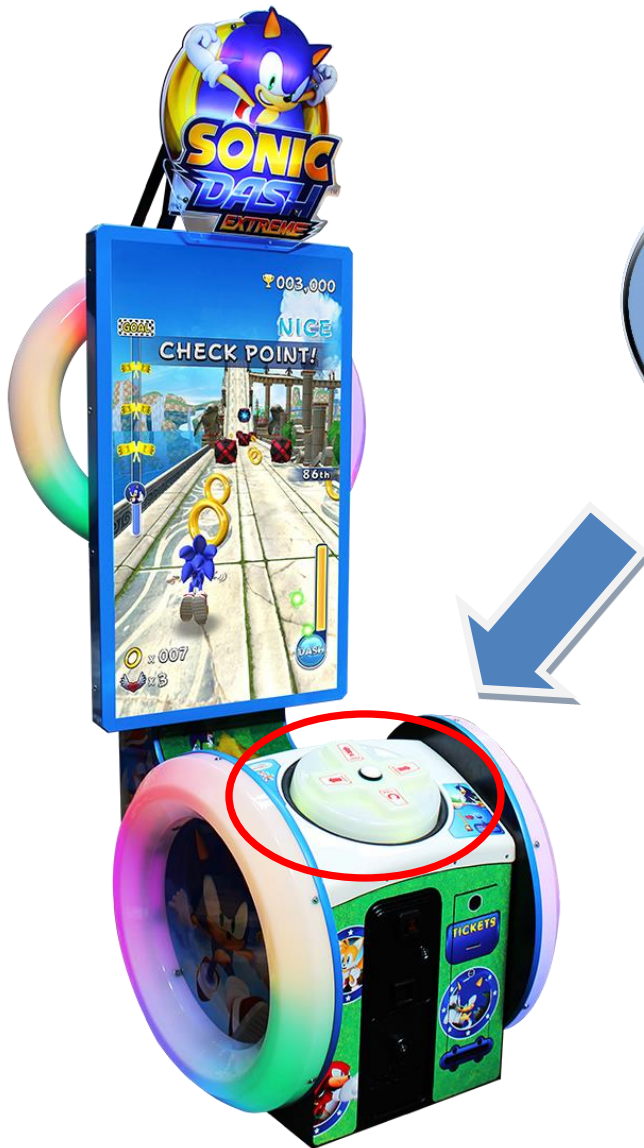




## TECHNICAL BULLETIN

Product: Sonic Dash  
Manufacturer: Sega  
Review Date: February 2016



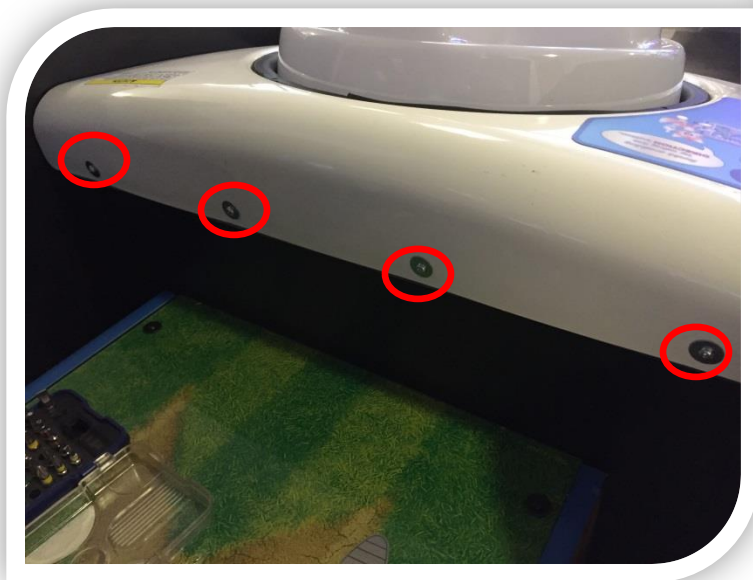
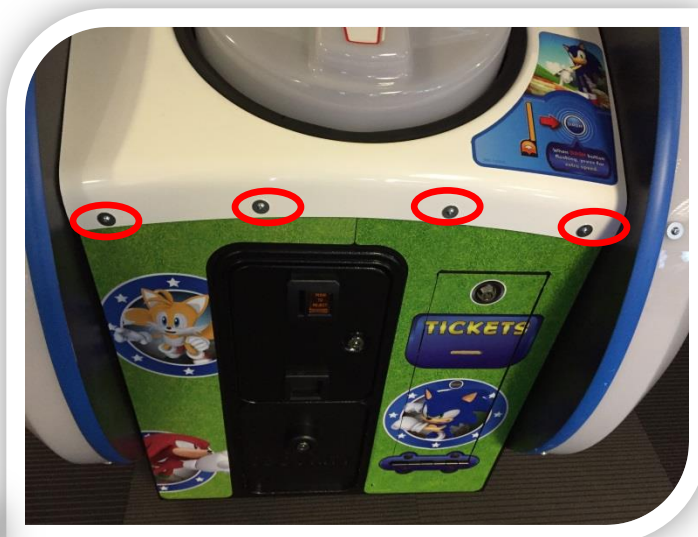
In certain situations, it has been noted that the D-Pad controller can stick when played.

To overcome this it may be a requirement to apply grease to the under plate and spring assembly.



## TECHNICAL BULLETIN

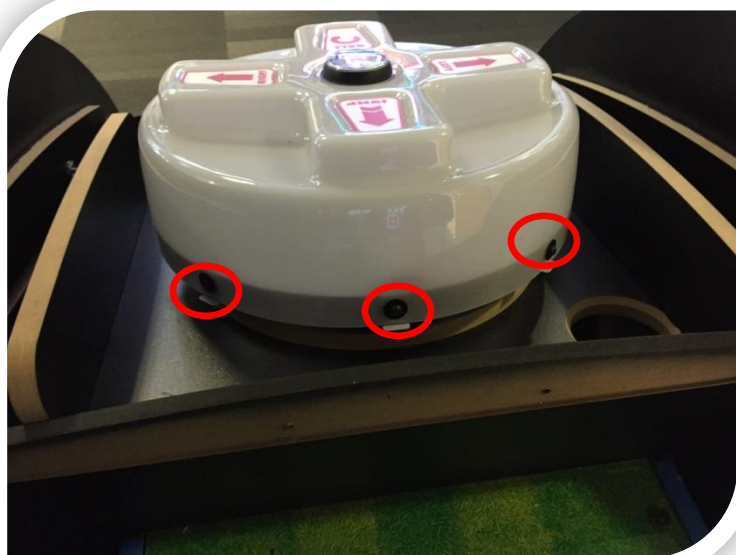
Remove the 8 fixings  
from the front and rear of  
the outer shrouding & lift  
off





## TECHNICAL BULLETIN

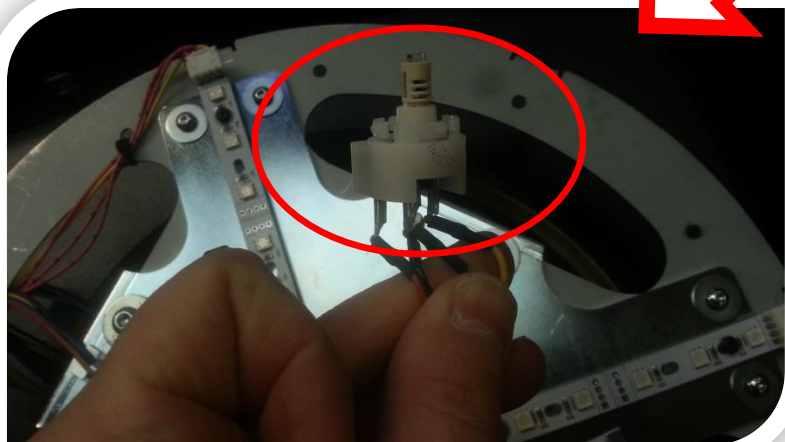
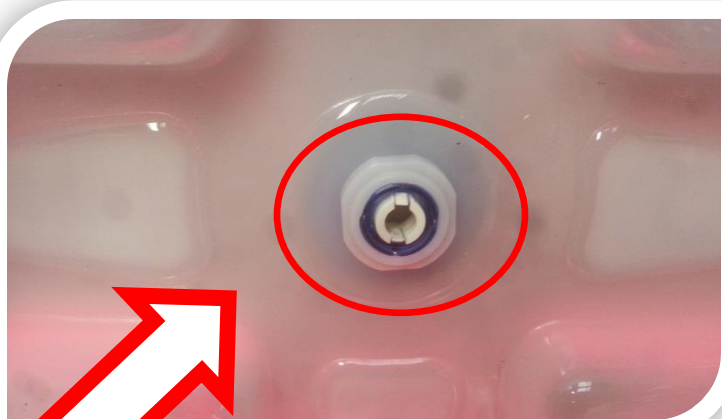
Remove the 6 fixings  
from the front and rear of  
the D-Pad molding





## TECHNICAL BULLETIN

Carefully lift up and pull the LED lamp out of the socket (It is a snap in type and pulls straight down)



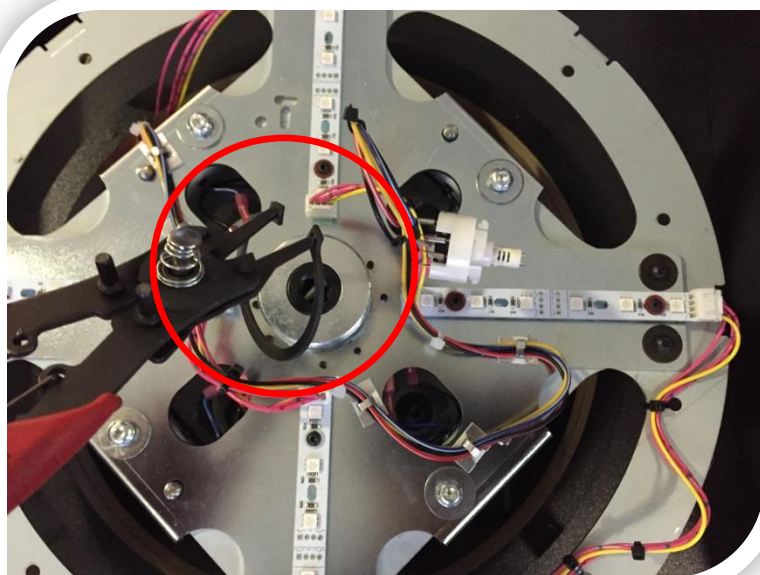
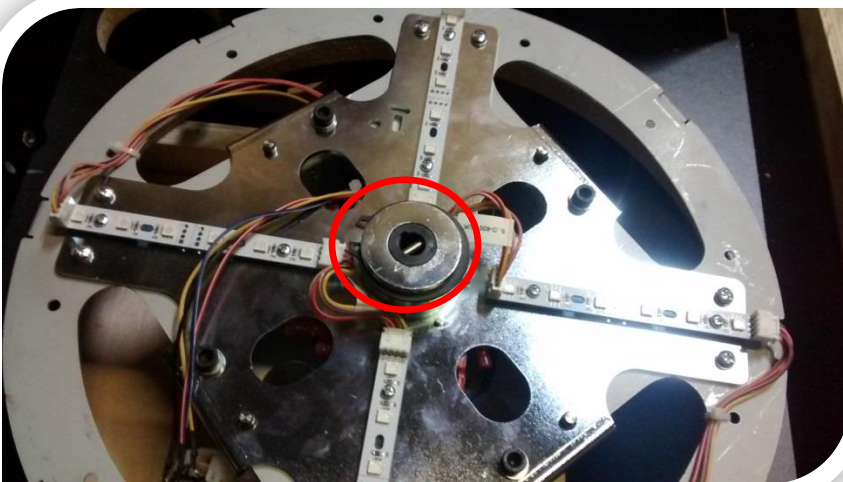
Remove the D-Pad molding





## TECHNICAL BULLETIN

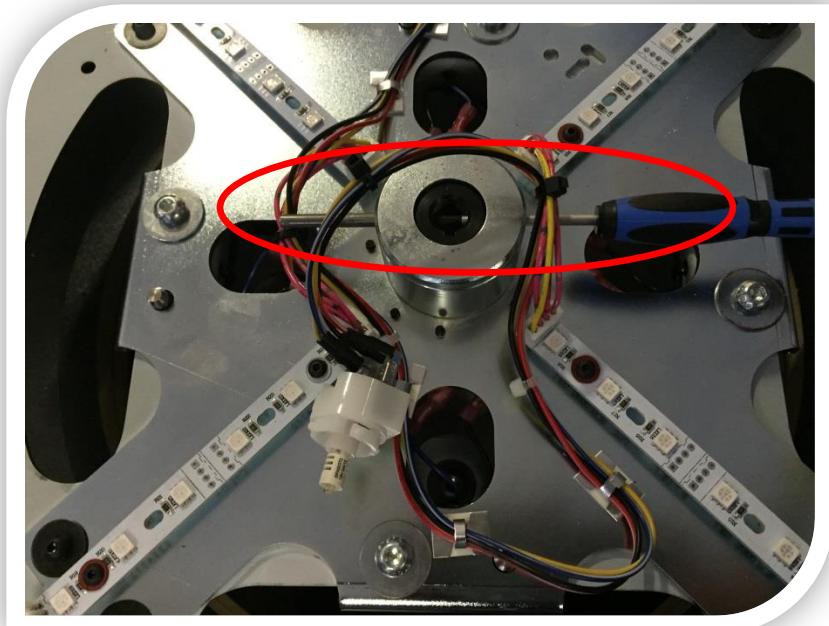
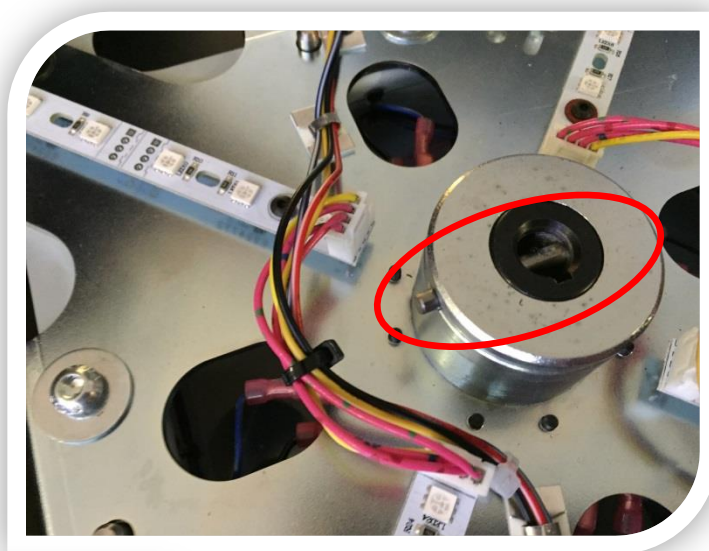
Using a pair of pliers or  
c-clip tool, remove the  
c-clip from the shaft





## TECHNICAL BULLETIN

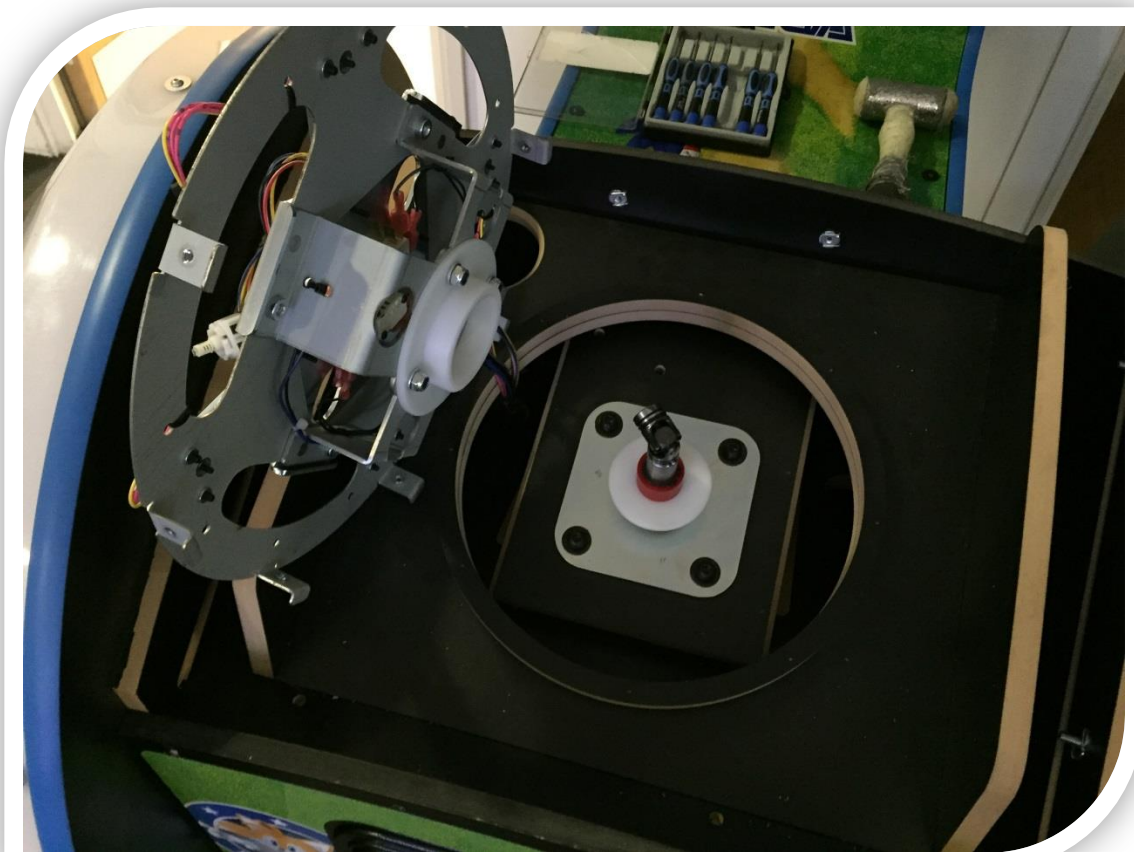
Using a screwdriver and  
hammer, carefully  
knock the center-shaft  
pin out





## TECHNICAL BULLETIN

Lift up the lower D-Pad  
assembly and carefully  
rest on its edge.

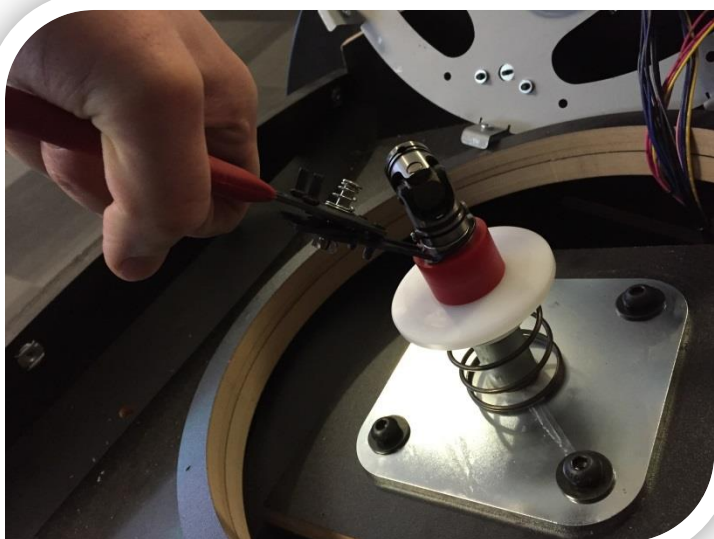
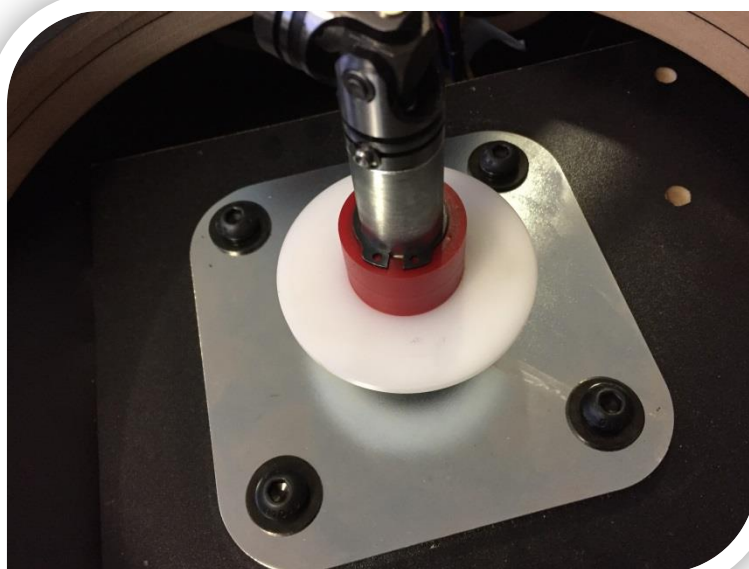






## TECHNICAL BULLETIN

Push down on the red rubber bush and loosen off the C-clip so that the spring and bush pop up.



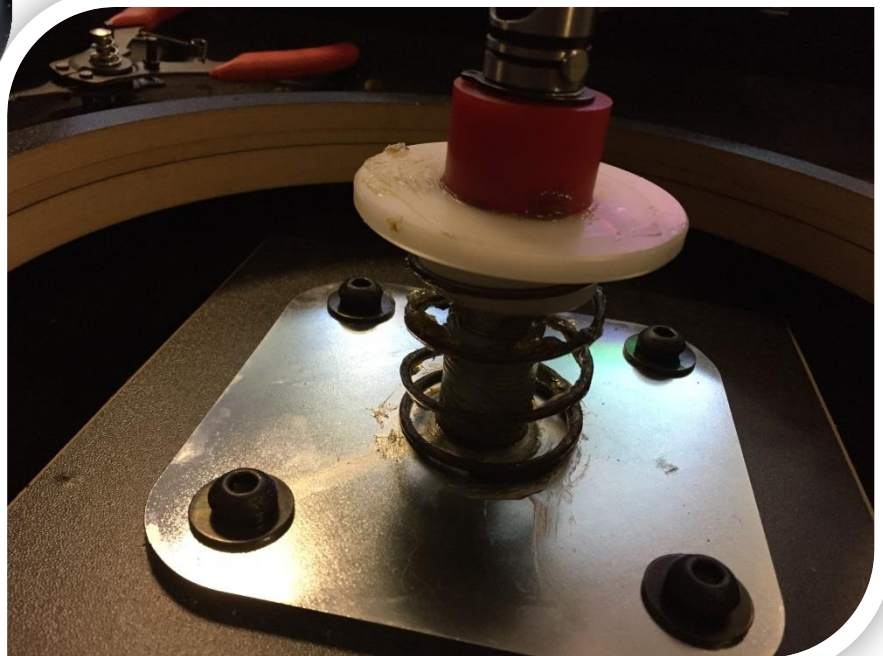
The C-clip does not need to be removed from the shaft





## TECHNICAL BULLETIN

Using a brush, apply a semi-liberal coating of multipurpose grease to the shaft and spring.



Push the plate up and down a few times to work in the grease.

Push down and re-attach the c-clip into the groove on the shaft & clean up any residual grease.

Re-assemble the cabinet in reverse order.