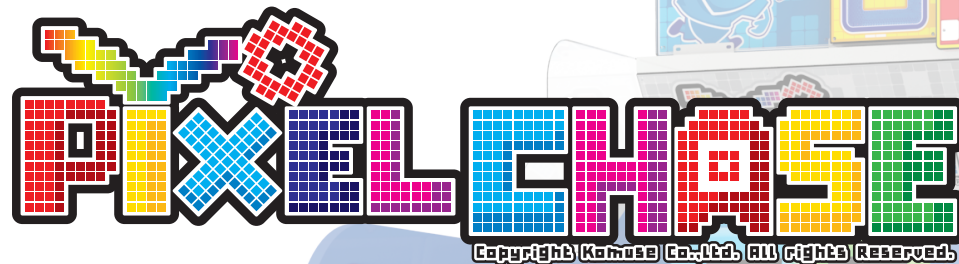


Mega Bonus Marquee Installation Manual



IMPORTANT

- Please read the manual carefully and keep it in mind before using this machine.
- Put this manual within touch of your reference in anytime.

Version 1.0 A
December 2018

*** Contents**

1. SPECIFICATION AND DIMENSIONS (2p)

- 1-1. DIMENSIONS
- 1-2. SPECIFICATION

2.COMPONENTS (3p)

- 2-1 COMPONENTS

3 . MAIN BOARD DIP SWITCH SETTING (4p)

4 . ASSEMBLY MANUAL (5p)

- 4-1 BOLT LIST
- 4-2 ASSEMBLY GUIDE

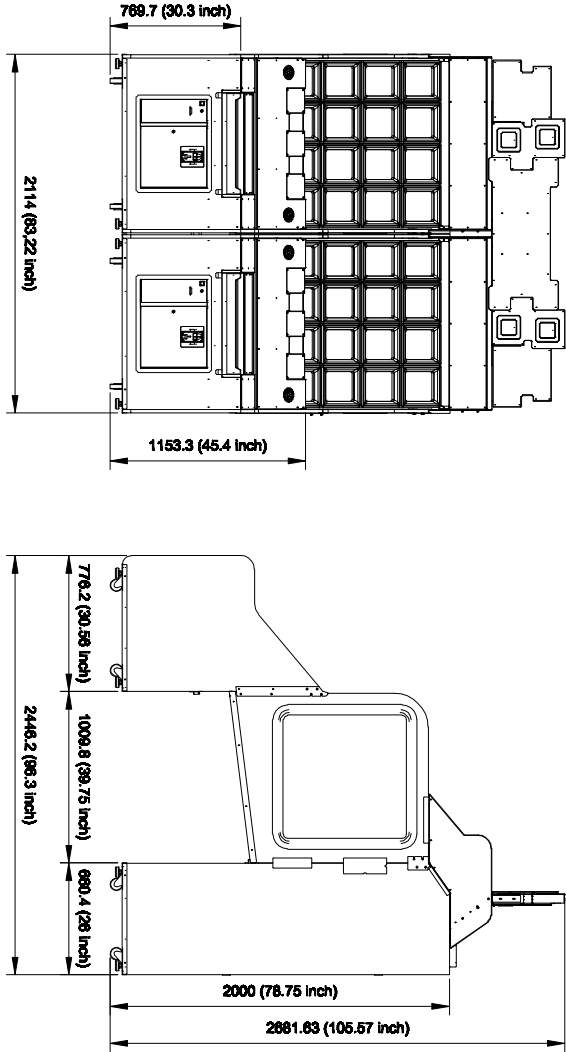
5 . ASSEMBLING PIXEL CHASE LINKBILLBOARD (13p)

- 5-1 LINKBILLBOARD CENTER Ass'y
- 5-2 LINKBILLBOARD SIDE L Ass'y
- 5-3 LINKBILLBOARD SIDE R Ass'y
- 5-4 LINKBILLBOARD Ass'y

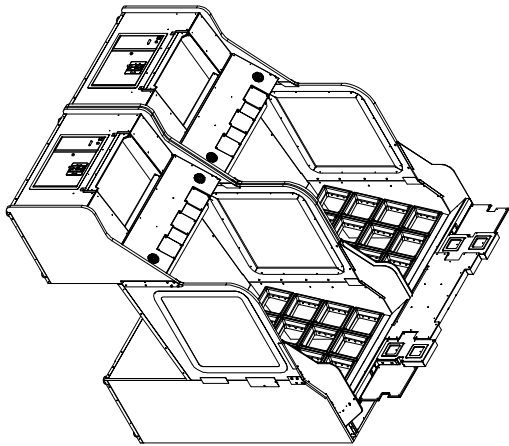
6 . SHEET BOM (17p)

1. SPECIFICATION AND DIMENSIONS

1-1. DIMENSIONS



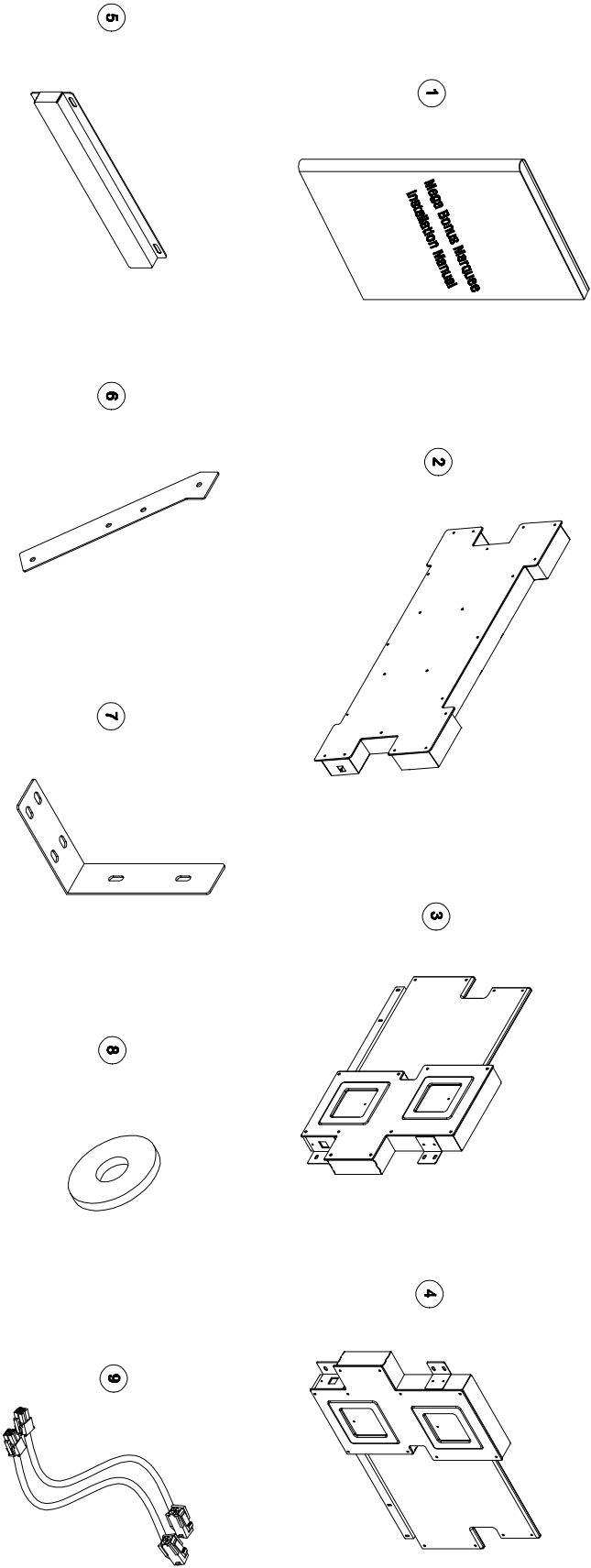
1-2. SPECIFICATION



NOMINATED VOLTAGE RANGE	AC 120V	AC 230V
NOMINATED FREQUENCY RANGE	50Hz / 60Hz	50Hz / 60Hz
AVERAGE POWER CONSUMPTION	245W (2.1A)	245W (1.1A)
MAXIMUM POWER CONSUMPTION	285W (2.4A)	285W (1.3A)

2. COMPONENTS

2-1. COMPONENTS



NO.	PART NAME	SPEC.	QUANTITY	CODE NO.
1	Mega Bonus Harquee Installation Manual	PIXEL CHASE	1	MPPXOMAM003
2	LINKBILLBOARD CENTER ASS'y	ASSEMBLE (조립품)	1	APXOASMO04
3	LINKBILLBOARD SIDE L ASS'y	ASSEMBLE (조립품)	1	APXOASMO52
4	LINKBILLBOARD SIDE R ASS'y	ASSEMBLE (조립품)	1	APXOASMO53
5	FRONT CASE LINK HARNESS COVER BRKT	SPCC-1.2t	1	MPPXOMET115
6	LINKBILLBOARD ASS'y SIDE SUPPORT BRKT	SPCC-2t	2	MPPXOMET116
7	LINKBILLBOARD SIDE SUPPORT FIX BRKT	SPCC-2t	2	MPPXOMET110
8	M4 WHITE WASHER	SPCC-1.0t	4	MPPXOMET039
9	LINKBILLBOARD HARNESS ASS'y	HARNESS	1	APXOHAM002

3. MAINBOARD DIP SWITCH SETTING

When modify the Master's settings, both Master and Slave machines must be in attraction mode.

(Do not change setting while the machines are being played.)

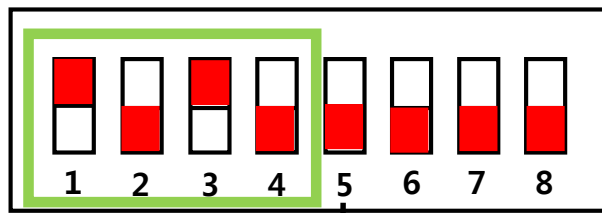
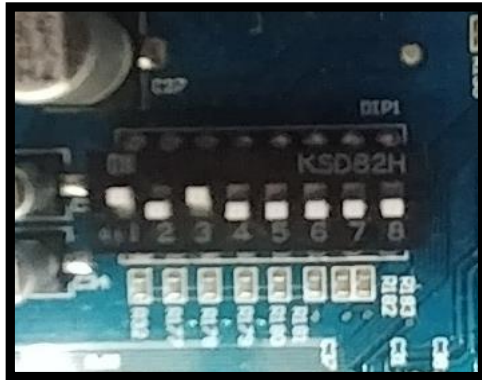
It takes 5 ~ 10 seconds to upload the Master's setting to the Slave machine.

Note!

If the Master is set, the Slave's setting will also follow the Master's setting.

Set the Ticket-Score Dip Switch setting (main board's Dip Switch 1~4) to be the same setting for both Master and Slave machines.

MASTER MAIN BOARD DIP SWITCH



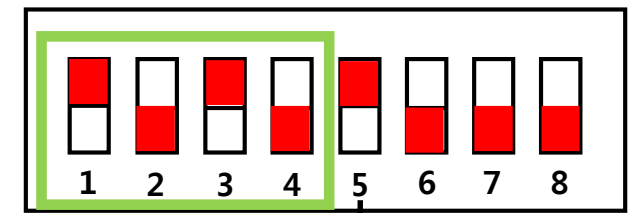
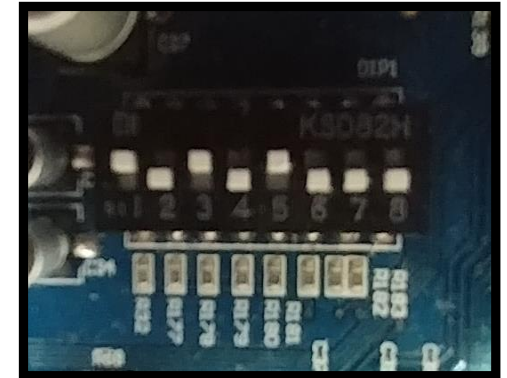
OFF



1P MASTER

2P SLAVE

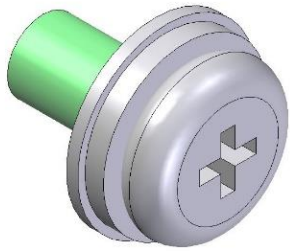
SLAVE MAIN BOARD DIP SWITCH



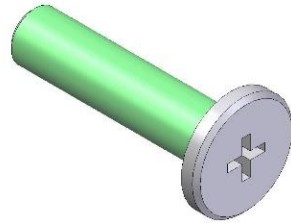
ON

SAME SETTING

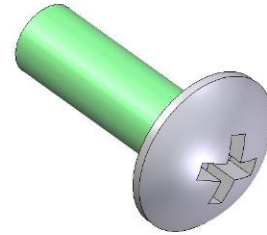
4-1 BOLT LIST



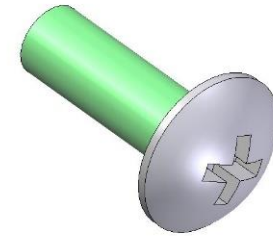
**SEMS BOLT
(M6 X 16L) – 8EA**



**FLAT HEAD BOLT
(M6 X 12L) – 16EA**



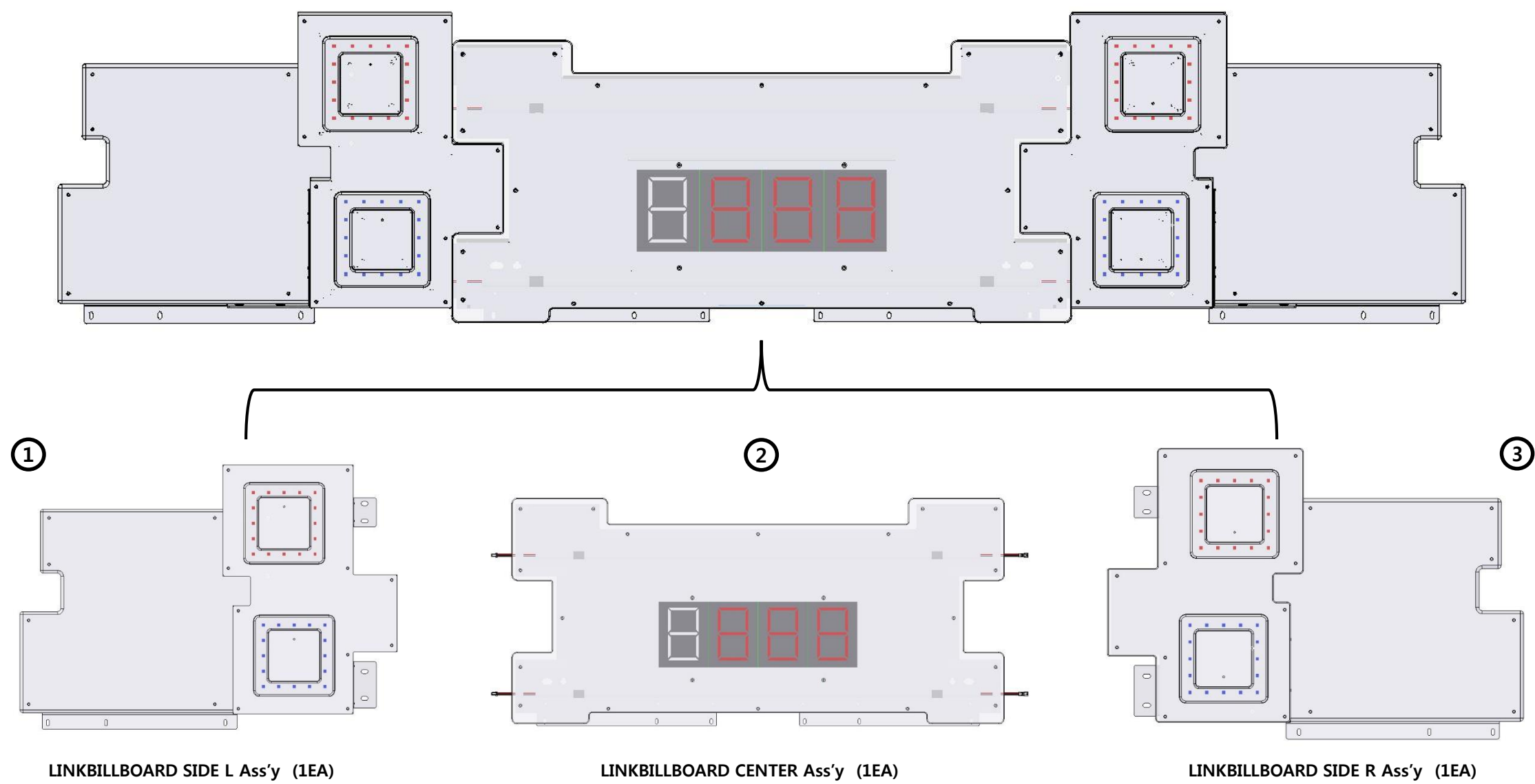
**TH BOLT
(M4 X 12L) – 16EA**



**TH BOLT
(M4 X 25L) – 4EA**

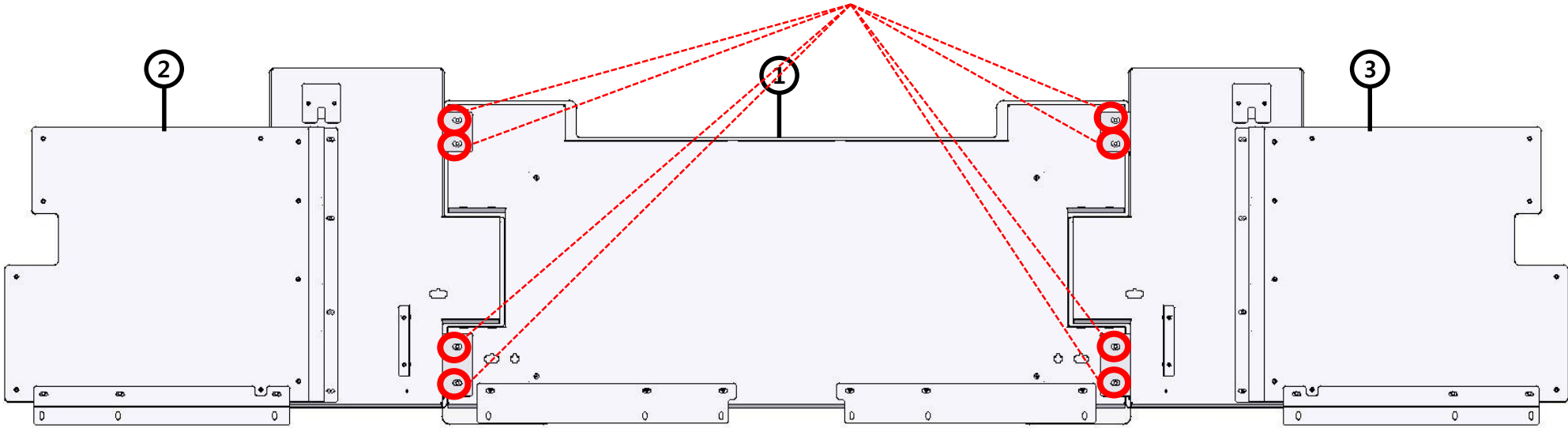
4-2 ASSEMBLY GUIDE

The following is the components of Mega Marquee (Link Billboard)



STEP 1 : ASSEMBLE MEGA MARQUEE (LINK BILLBOARD)

SEMS BOLT (M6 X 16L) – 8EA



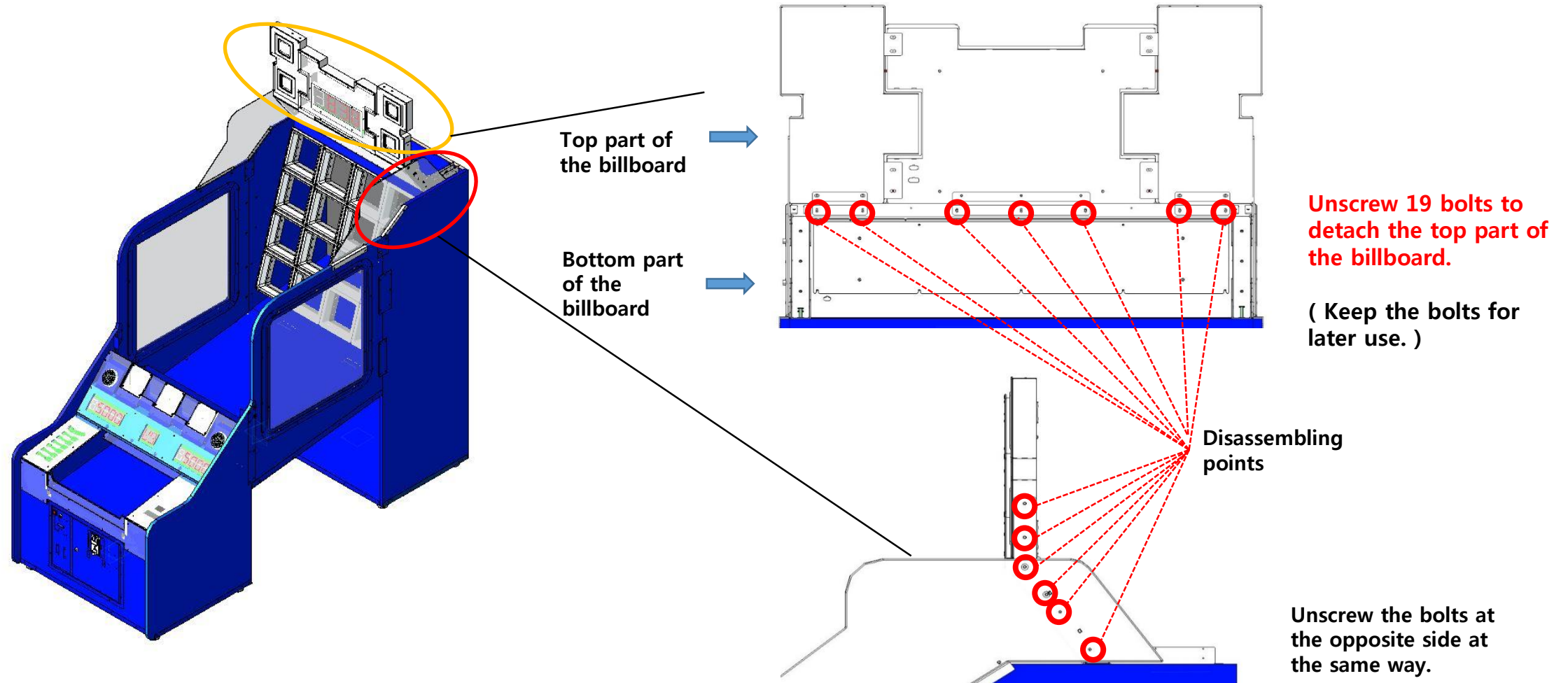
Position ② Link Billboard Side L and ① Link Billboard Center as shown above and secure them using 4 SEMS bolts (M6x16L)

Position ③ Link Billboard Side R next to ① Link Billboard Center as shown above and secure them using 4 SEMS bolts (M6x16L)

STEP 2: DISASSEMBLE EXISTING SINGLE BILLBOARD

(Disassemble according to the following order.)

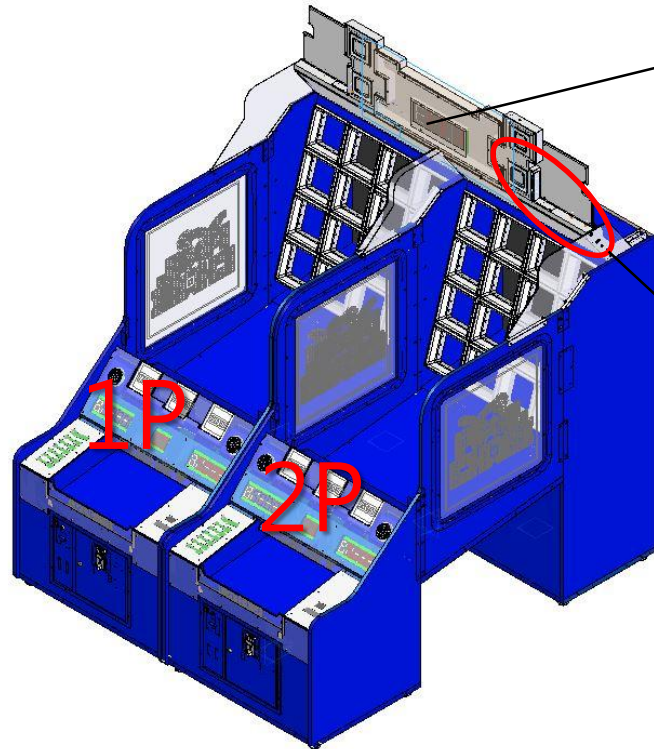
Leave the bottom part of the existing billboard and detach the top part of it only (as shown below).



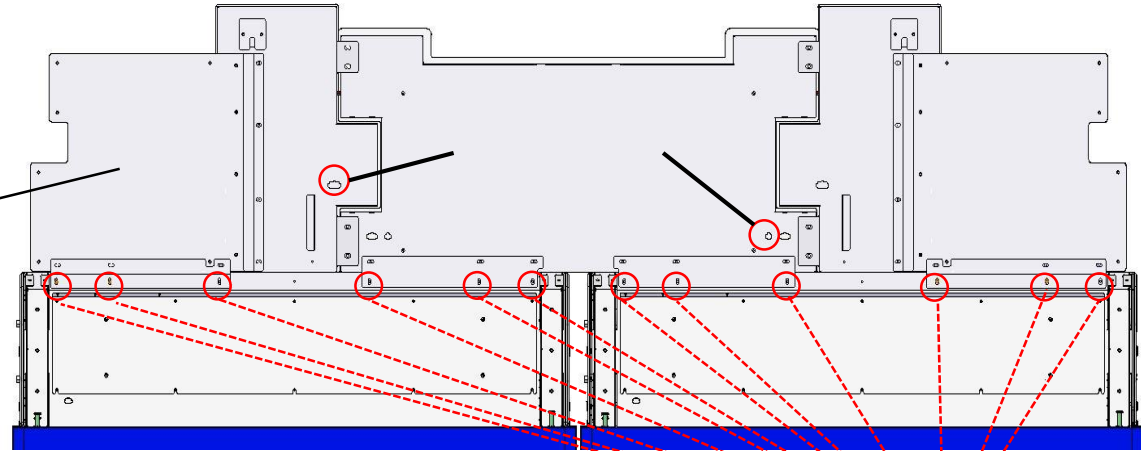
STEP 3 : INSTALL MEGA MARQUEE (1)

Place the assembled mega marquee on the cabinet as shown below. Secure the marquee using the bolts specified below. And, fix the Billboard Side Support Fix Brkt as shown below.

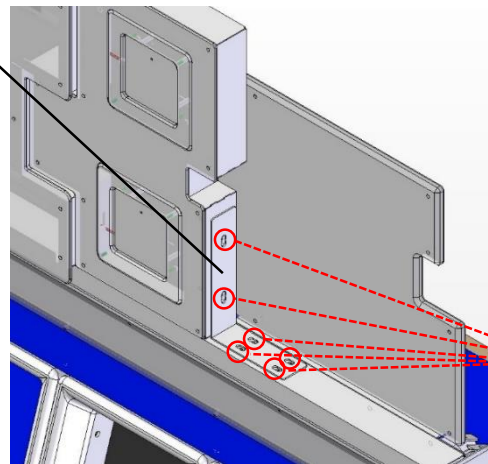
[Note]
Mega Marquee is heavy!
Carefully assemble to prevent it from falling down.



Remark : They have no distinction among 1P cabinet and 2P cabinet.



Assembling points
TH BOLT (M4 X 12L)
- 12EA

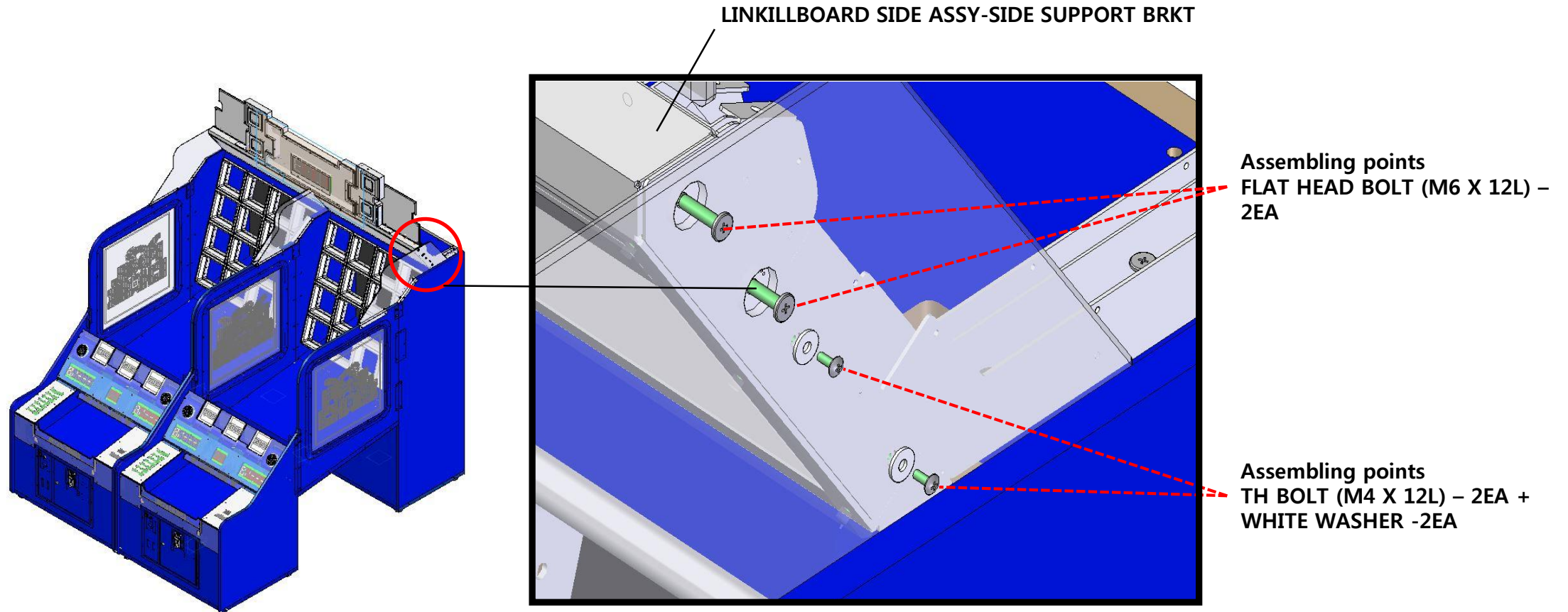


BILLBOARD SIDE SUPPORT FIX BRKT

Assembling points
Flat Head BOLT (M6 X 12L) - 6EA
(Assemble it at the opposite side at the same way.)

STEP 4 : INSTALL MEGA MARQUEE (2)

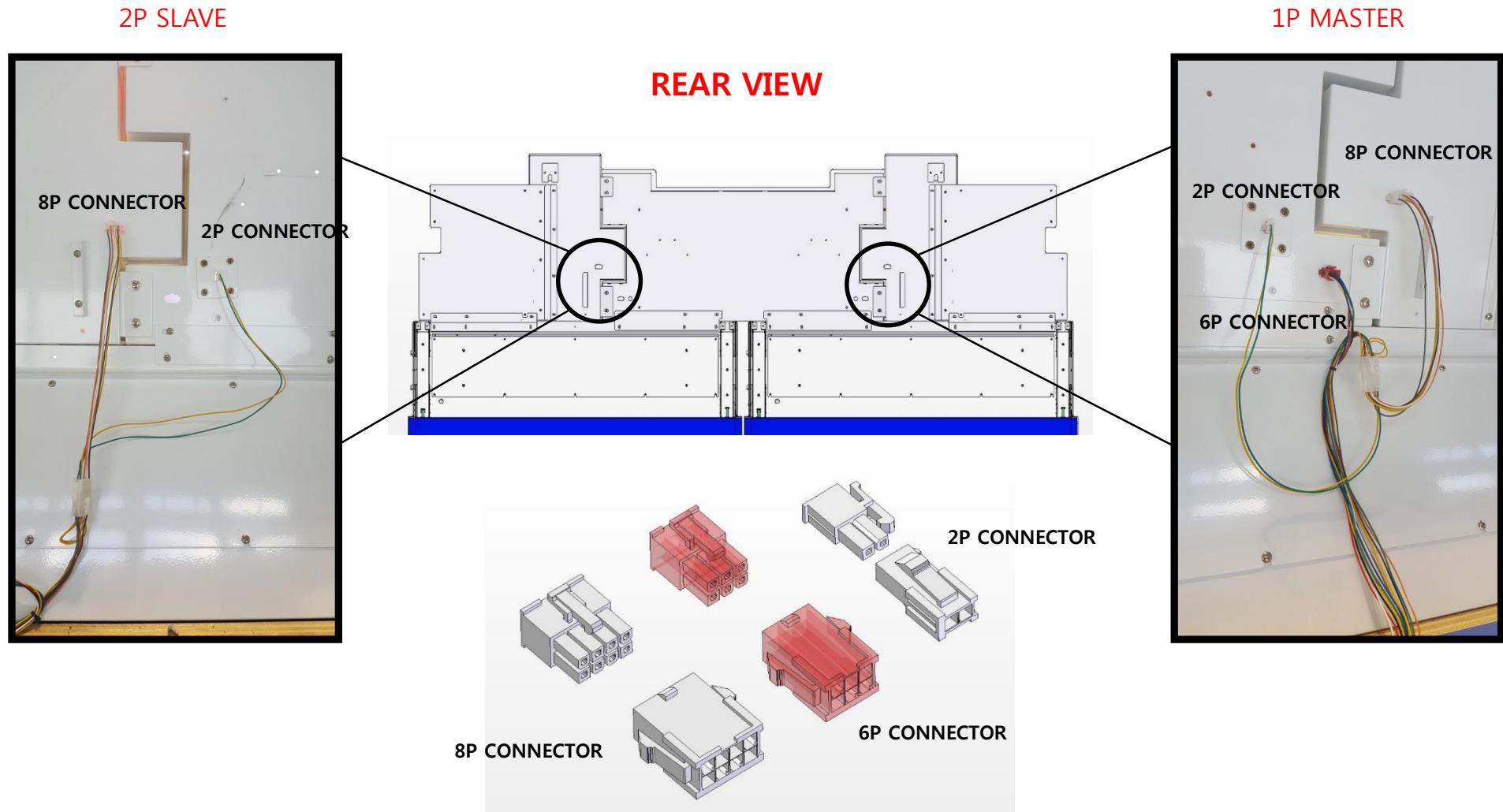
After completing STEP 3, insert the 'LINKBILLBOARD SIDE ASSY-SIDE SUPPORT BRKT' between the plexi and the metal fitting and secure them using 2 FLAT HEAD BOLT (M6x12L), white washers and 2 TH BOLT (M4X12L).



(Assemble it at the opposite side at the same way.)

STEP 5 : CONNECT WIRES FOR MEGA MARQUEE

Following is detailed view of the wires from the Mega Marquee.
Connect the wires from the mega marquee to the cabinet connectors.

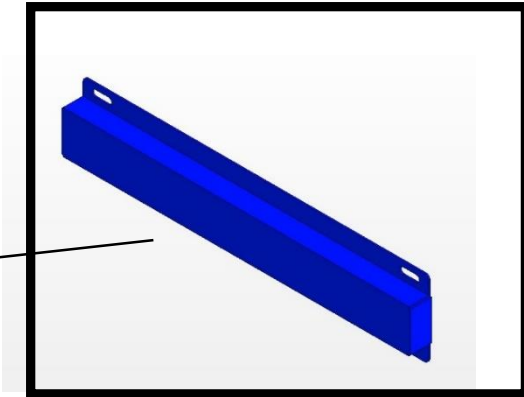
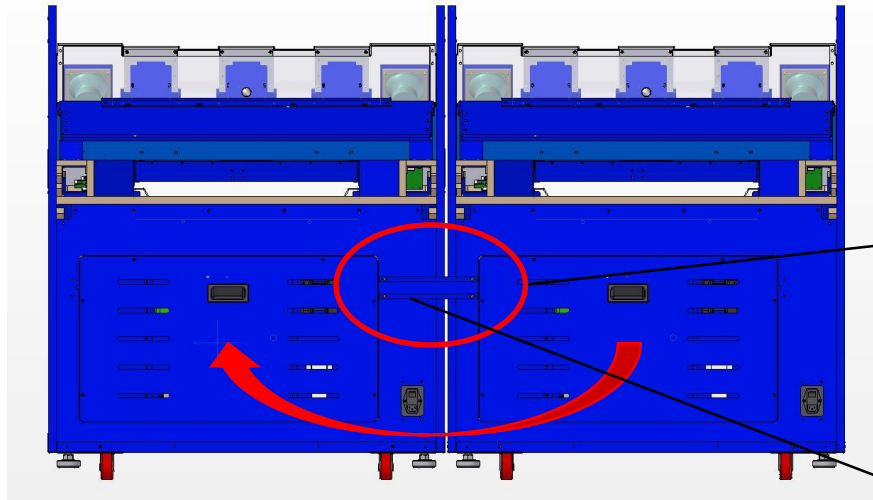


STEP 5 : COMBINE 1P & 2P CABINETS

Open the doors of the Front Case Ass'y.

Connect the green color connector of the link wire to 1P main board (refer to picture below) and also insert opposite connector to 2P main board. (The link wire is enclosed with the mega marquee.)

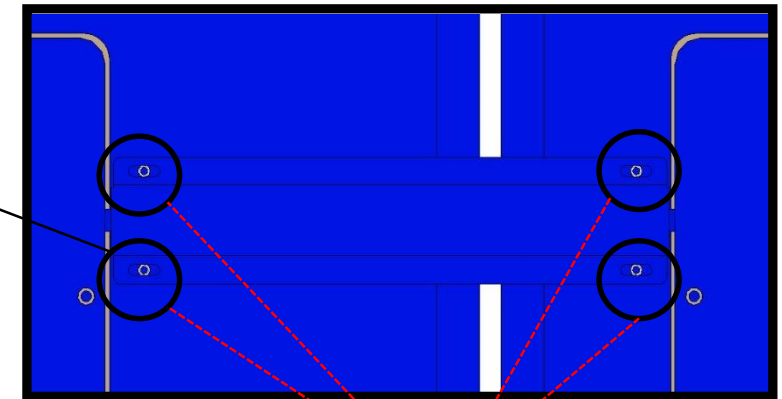
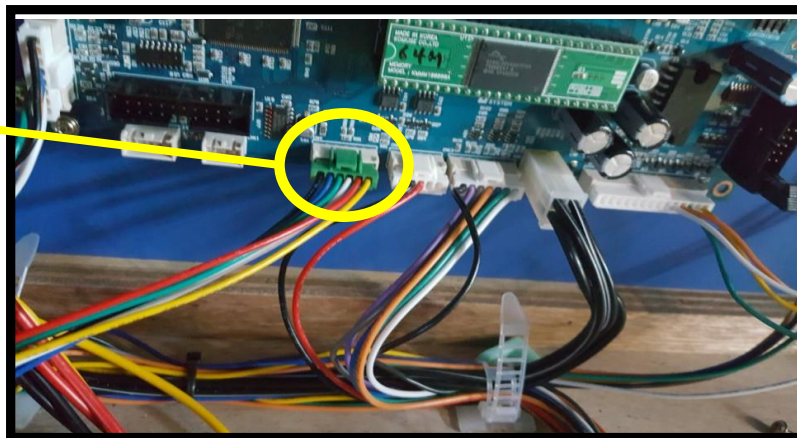
And the cover the wire with the cover bracket and 4 TH Bolts.



FRONT CASE LINK HARNESS COVER BRKT

Connect 1P main board and 2P main board with the link wire.

GREEN
CONNECTOR



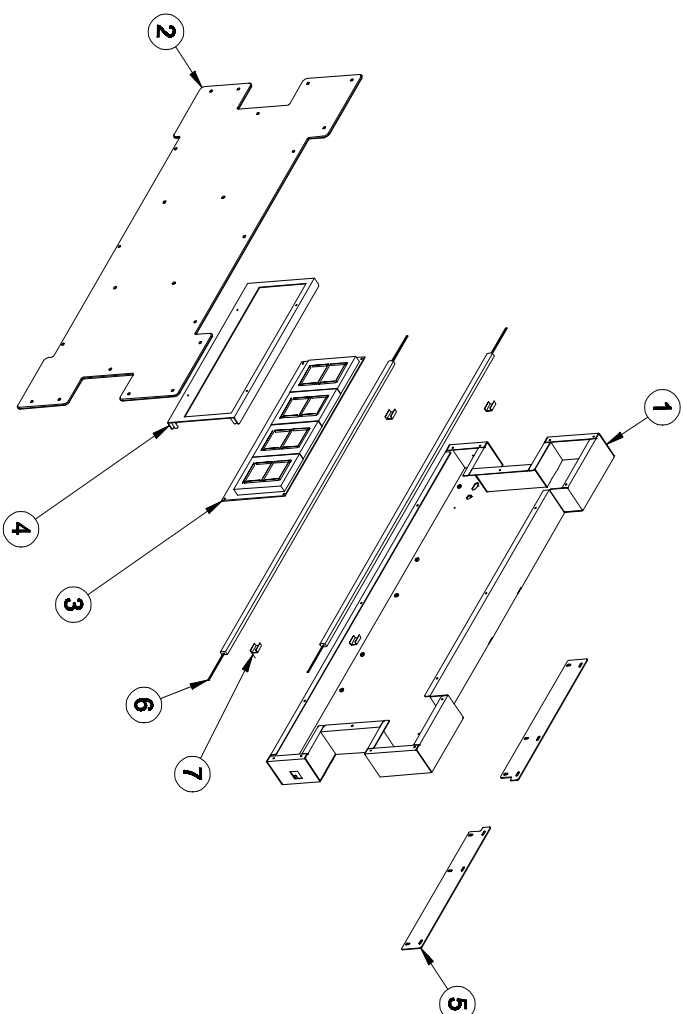
Reference picture of the Link Wire connected between 1P board and 2P board.

Assembling points
TH BOLT (M4 X 25L) – 4EA

5.ASSEMBLING PIXEL CHASE LINKBILLBOARD

5-1.LINK BILLBOARD CENTER Ass'y.

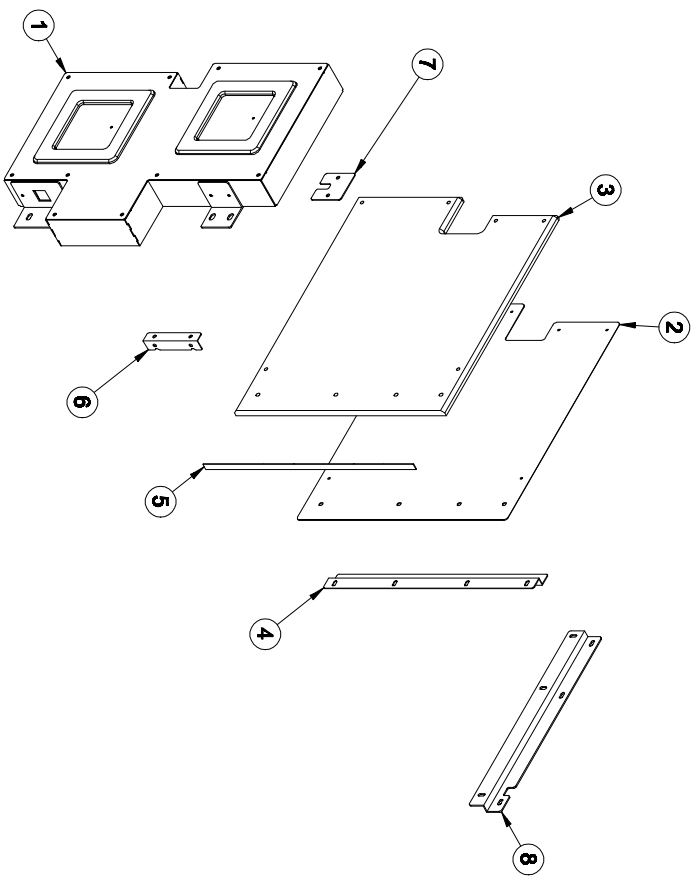
APIX0ASM004



NO.	Code Number	QUANTITY	PART NAME	SPEC.
1	MPX0MET105	1	LINK BILLBOARD CENTER FRAME WELD Ass'y	WELD Ass'y (용접물)
2	MPIX0A&S012	1	LINK BILLBOARD CENTER FRAME COVER ACRYL	PC -3.0t
3	APIX0BOA006	1	BIG BONUS FND	PCB -1.6t
4	MPIX0MET067	1	BILLBOARD BONUS FND FIX BRKT	SPCC-1.6t
5	MPIX0MET111	2	LINK BILLBOARD CENTER BOTTOM FIX BRKT	SPCC-2t
6	MZZZ0LSB009	2	LED STICK BAR CW800 SMP250 02	OPAQUE ACRYL
7	MSWI0LSB002	4	LED STICK BAR BRK	12MM

5-2.LINKBILLBOARD SIDE L Ass'y

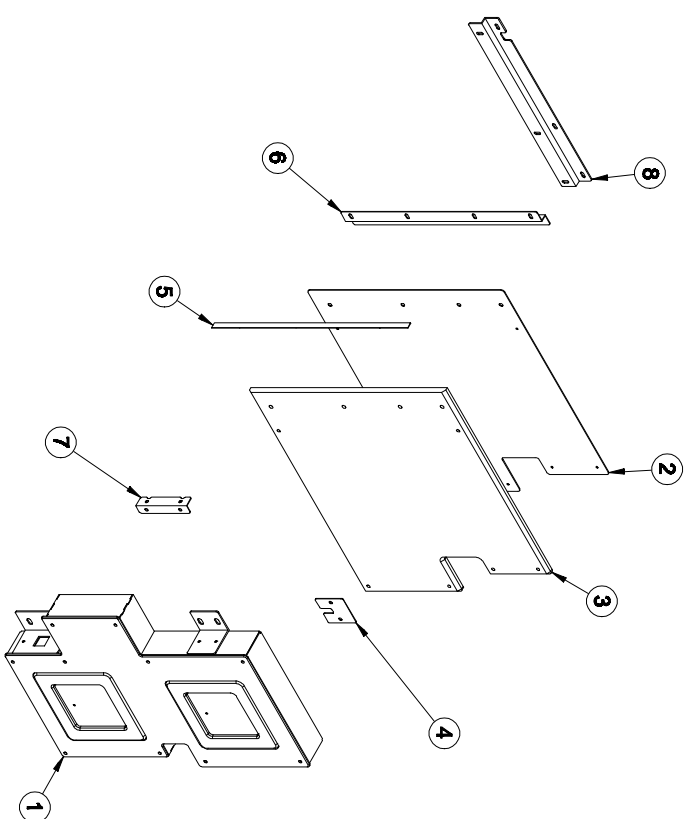
APIX0ASMO52



NO.	Code Number	QUANTITY	PART NAME	SPEC.
1	APIX0ASMO10	1	BILLBOARD SIDE Ass'y	OWNERS MANUAL (49page)
2	MP1X0MET107	1	LINK BILLBOARD SIDE BACK BRKT_mir	SPCC-1.2t
3	MP1X0ACR010	1	LINK BILLBOARD SIDE ACRYL_mir	CLEAR ACRYL-10.0t
4	MP1X0MET108	1	LINK BILLBOARD SIDE FLEXIBLE FIX BRKT	SPCC-1.2t
5	APIX0FLM008	1	LINK BILLBOARD SIDE FLEXIBLE(350mm)	WHITE COLOR
6	MP1X0MET114	1	LINK BILLBOARD SIDE HARNESS BRKT	SPCC-1.2t
7	MP1X0MET109	1	LINK BILLBOARD SIDE FLEXIBLE COVER BRKT	SPCC-1.2t
8	MP1X0MET113	1	LINK BILLBOARD SIDE BOTTOM FIX BRKT_mir	SPCC-2t

5-3.LINKBILLBOARD SIDE L Ass'y

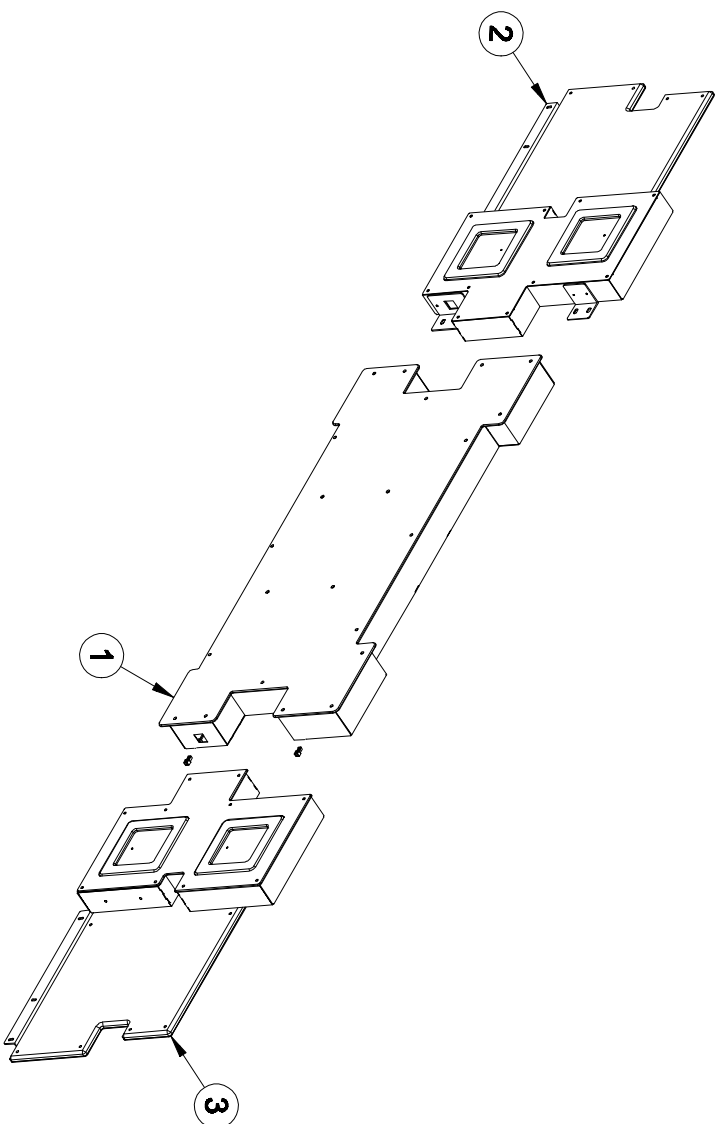
APIX0ASM052



NO.	Code Number	QUANTITY	PART NAME	SPEC.
1	APIX0ASM011	1	BILLBOARD SIDE Ass'y_mlr	OWNERS MANUAL (49page)
2	MPIXOMET106	1	LINK BILLBOARD SIDE BACK BRKT	SPCC-1.2t
3	MPIX0ACR009	1	LINK BILLBOARD SIDE ACRYL	CLEAR ACRYL-10.0t
4	MPIXOMET109	1	LINK BILLBOARD SIDE FLEXIBLE COVER BRKT	SPCC-1.2t
5	APIX0FLM008	1	LINK BILLBOARD SIDE FLEXIBLE(350mm)	WHITE COLOR
6	MPIXOMET108	1	LINK BILLBOARD SIDE FLEXIBLE FIX BRKT	SPCC-1.2t
7	MPIXOMET114	1	LINK BILLBOARD SIDE HARNESS BRKT	SPCC-1.2t
8	MPIXOMET112	1	LINK BILLBOARD SIDE BOTTOM FIX BRKT	SPCC-2t

5-4.LINK BILLBOARD Ass'y

APIX0ASM052



NO.	Code Number	QUANTITY	PART NAME	SPEC.
1	APIX0ASM004	1	LINK BILLBOARD CENTER Ass'y.	4-1. (12page)
2	APIX0ASM052	1	LINKBILLBOARD SIDE L Ass'y	4-2. (13page)
3	APIX0ASM053	1	LINKBILLBOARD SIDE R Ass'y	4-3. (14page)

PIXEL CHASE LINK BILLBOARD



2018. 12. 19

PIXEL CHASE (MEAG BONUS MARQUEE)

IMAGE		NAME	QUANTITY	METERIAL	CDDE NO.
1		LINK BILLBOARD CENTER FRAME COVER ACRYL	1 EA	ACRYL Silk screen	MPIX0A&S012
2		BILLBOARD SIDE FRAME COVER ACRYL L	1 EA	ACRYL Silk screen	MPIX0A&S010
3		BILLBOARD SIDE FRAME COVER ACRYL R	1 EA	ACRYL Silk screen	MPIX0A&S011
4		LINK BILLBOARD SIDE ACRYL SHEET L	1 EA	LIGHTING SHEET	MPIX0SHE050
5		LINK BILLBOARD SIDE ACRYL SHEET R	1 EA	LIGHTING SHEET	MPIX0SHE051
6		RING WASHER SHEET	12 EA	FILM SHEET	MPIX0SHE035
7		BILLBOARD SIDE FRAME SHEET	4 EA	SHEET Silk screen	MPIX0SHE001