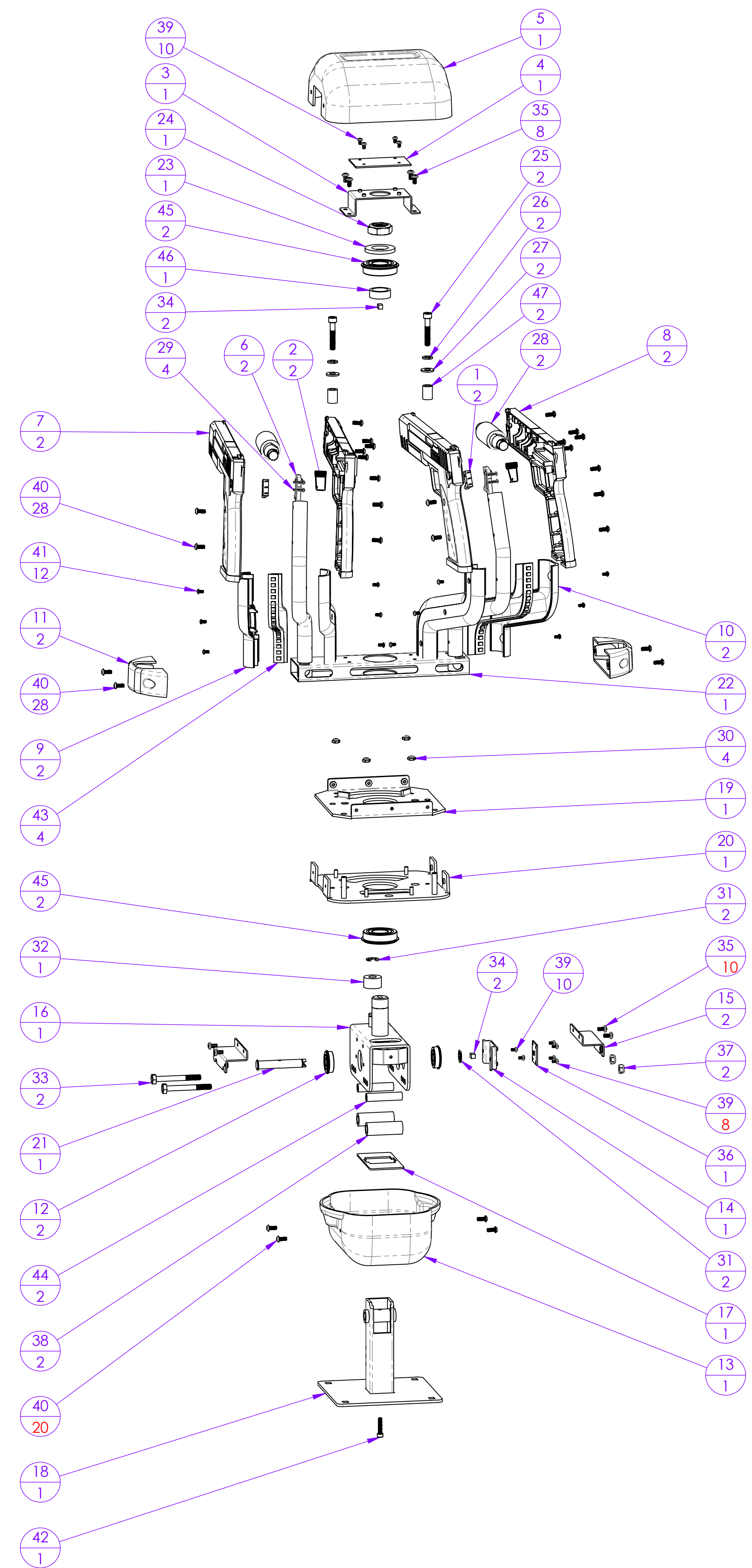
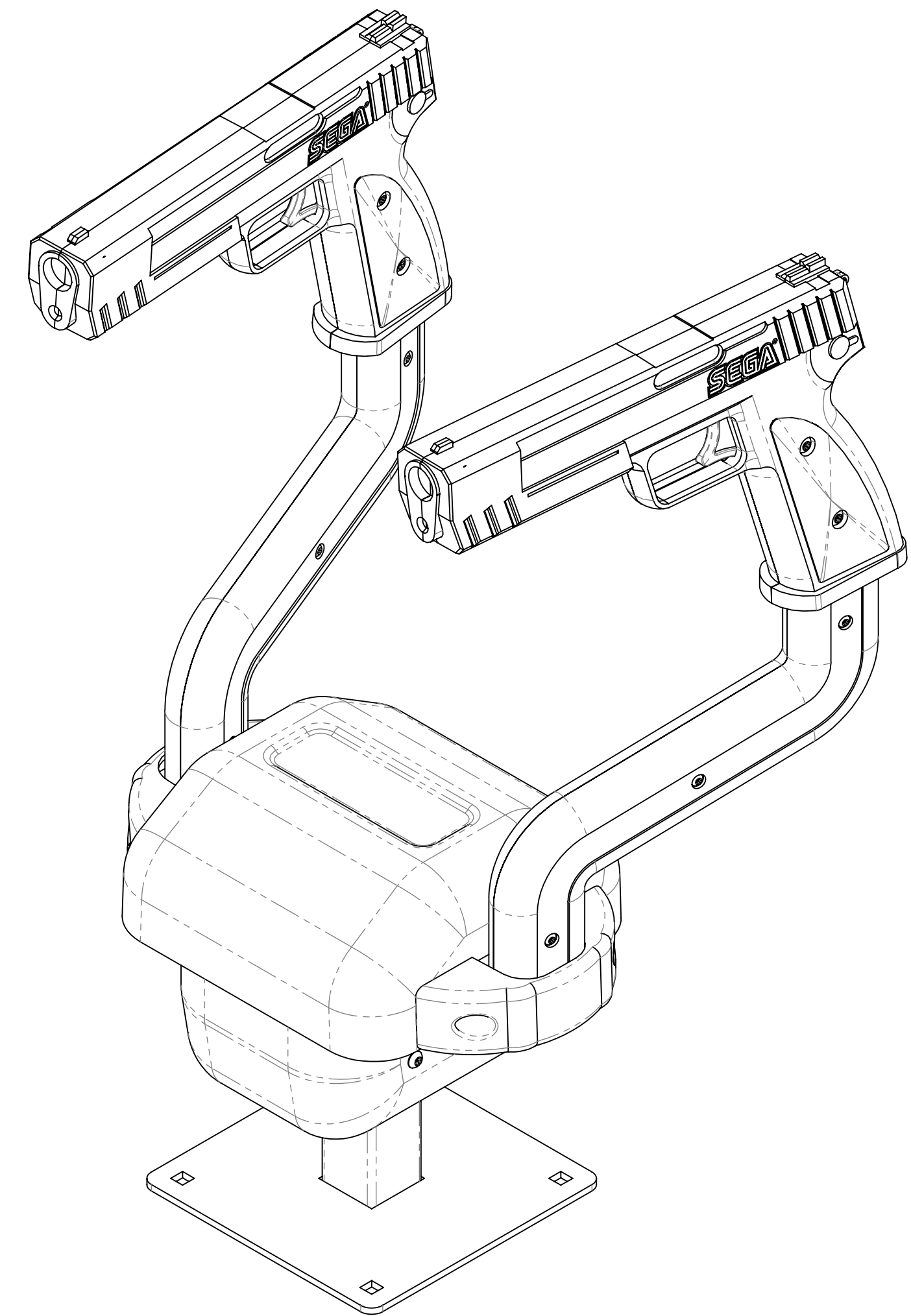


REV.		DESCRIPTION		REVISIONS		DRAWN BY		DATE	
P1									



ITEM NO.	QTY.	PART NUMBER	DESCRIPTION
47	2	20250100	MI GUN POLE SPACER #2
46	1	20250000	MI GUN POLE SPACER #1
45	2	20236000	BEARING, 20MM SHAFT
44	2	20222600	BUMPER SPACER
43	4	20221001	LED STRIP, BACK
42	1	20219301	SCREW, M4X0.7, 20MM LENGTH, HEX SCREW, BLACK OXIDE
41	12	20219201	SCREW, M3X0.5, 6MM LENGTH, SECURITY TORX, BLACK OXIDE
40	20	20214400	SCREW, M4X0.7, 10MM LENGTH, SECURITY TORX, BLACK OXIDE
39	8	20219000	SCREW, M3X0.5, 5MM LENGTH, PHILLIPS PAN HEAD
38	2	20215800	BUMBER, 44.77MM L, .16MM OD, 10MM ID
37	2	20215700	NUT, NYLOCK, M6, ZINC
36	1	20215600	PCBA, MAGNET SENSOR
35	10	20215500	SCREW, M4X0.7, 8MM LENGTH, PHILLIPS PAN HEAD
34	2	20215400	BIPOLAR MAGNET
33	2	20215300	HH BOLT, PARTIAL THREAD, M6X 60MM L
32	1	20215200	BUMBER, 12.7 L, 22MM OD, 9.5 ID
31	2	20215103	M8X1MM E-RING
30	4	20215000	NUT, NYLOCK, M4X70, BO
29	4	20214600	SCREW, M2.2 THREAD FORMING, 12MM LENGTH
28	2	20214500	TUBULAR SOLENOID
27	2	20214300	WASHER, M6, ZINC
26	2	20214200	LOCKWASHER, M6 SPLIT, BO
25	2	20214100	SCREW, M6X1.0, 35MM LENGTH, PARTIAL THREADED HEX SCREWS
24	1	20214000	NUT, NYLOCK, M20 THIN
23	1	20213900	WASHER, M20
22	1	20213602	SUB, MAIN CROSSBAR WITH ARMS
21	1	20213500	PIVOT PIN, 3/8" OD
20	1	20213400	BEARING PLATE WITH TRAVEL OPENING, SWIVEL MECH
19	1	20213300	TRAVEL PLATE, 35 DEG EACH DIRECTION, SWIVEL MECH
18	1	20213200	MAIN POST WELDMENT, SWIVEL MECH
17	1	20213101	PINCH WASHER, 3.50 X 1.75
16	1	20213000	HOUSING WITH PIVOT & STOP PINS
15	2	20212900	LOWER COVER HOLD BRKT
14	1	20212800	BRACKET, PCBA MOUNTING, SIDE
13	1	20211501	LOWER DECORATIVE COVER
12	2	20211500	BEARING, 10MM SHAFT
11	2	20211401	DECORATIVE TRIM, CROSSBAR COVER
10	2	20211400	COVER, GUN SUPPORT TUBE, RIGHT
9	2	20211201	COVER, GUN SUPPORT TUBE, LEFT
8	2	20211200	PISTOL HALF, RIGHT, TOMB RAIDERS
7	2	20211000	PISTOL HALF, LEFT, TOMB RAIDERS
6	2	20210900	TRIGGER
5	1	20210801	COVER, UPPER SWIVEL ASSY
4	1	20210800	PCBA, MAGNET SENSOR
3	1	20210600	BRACKET, PCBA MOUNTING, TOP
2	2	20201801	TRIGGER SPRING
1	2	10110102	DB SWITCH ASSY WITH ROLLER ACT

NOTES:

- IDENTIFICATION:
BOX AND IDENTIFY WITH PART NUMBER, REVISION LETTER, DATE CODE AND COUNTRY OF ORIGIN.
- ITEMS NOT SHOWN:
20219600 VERTICAL SENSOR HARNESS HA10-102-00
20219700 MAIN HARNESS HA10-101-00
20219901 GROUND HARNESS HA10-106-00
20219404 MI GUN TRIGGER AND SOLENOID HARNESS HA10-100-00
- PACKAGING:
PARTS TO BE SUITABLY PACKED TO PREVENT DAMAGE DURING SHIPMENT.
- MATERIAL COMPLIANCE:
PARTS MUST BE ROHS COMPLIANT.

<p>THIRD ANGLE PROJECTION DO NOT SCALE DRAWING</p>	<p>TOLERANCES UNLESS OTHERWISE SPECIFIED</p> <p>XX ± 0.01 XXX ± 0.005 ANGLES ± 0.25°</p>	<p>DESCRIPTION MISSION IMPOSSIBLE DUAL PISTOL ASSY</p> <p>PART NUMBER MI-2001-01UK</p> <p>ENGINEER</p>	<p>DWG SIZE D</p> <p>SCALE 1:4</p> <p>REVISION P1</p> <p>SHEET 1 OF 1</p>	<p>1000 LEE STREET ELK GROVE VILLAGE, IL 60007 PHONE: 847-364-1149 FAX: 847-364-9805</p>
--	--	--	---	--