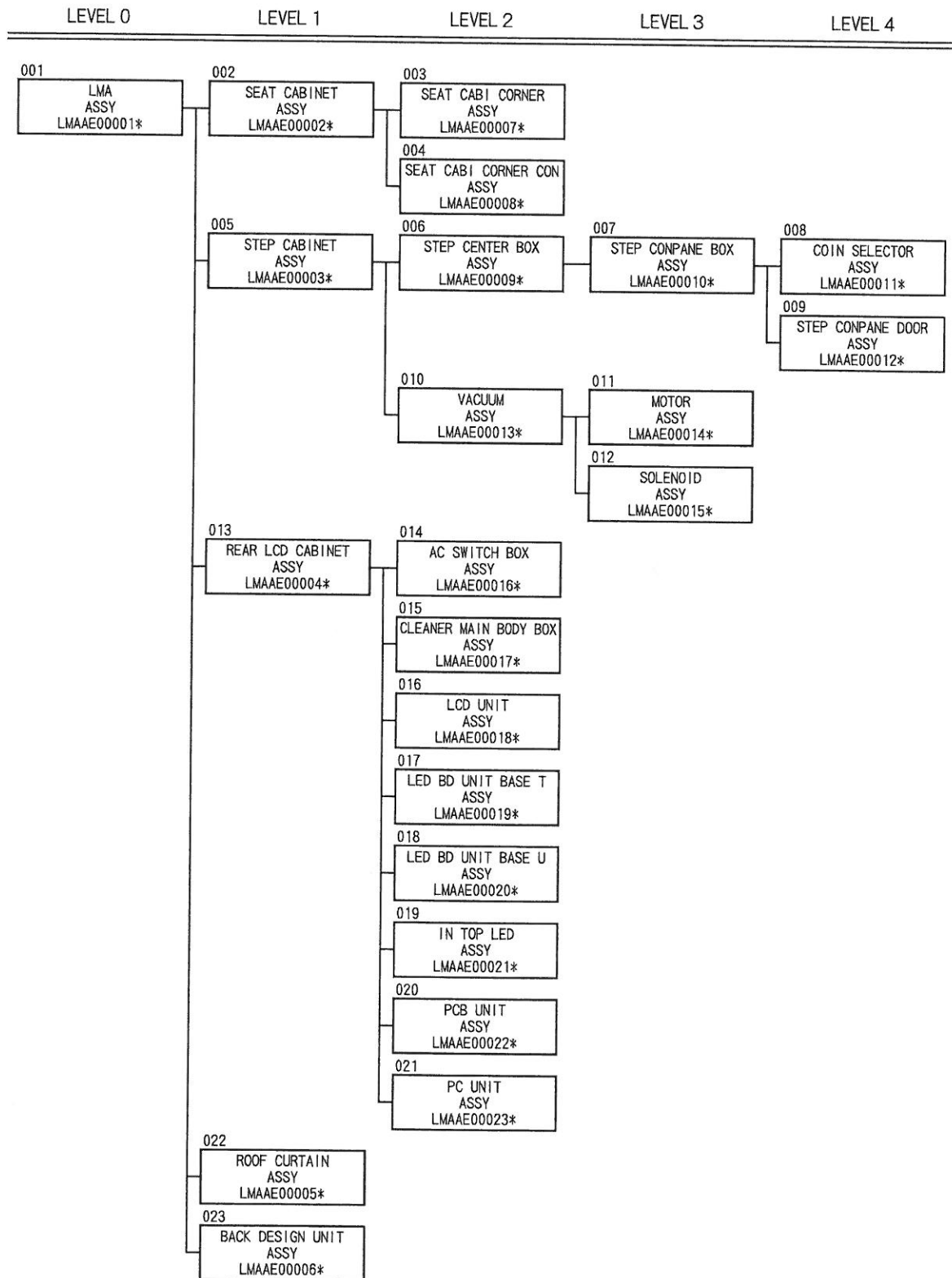


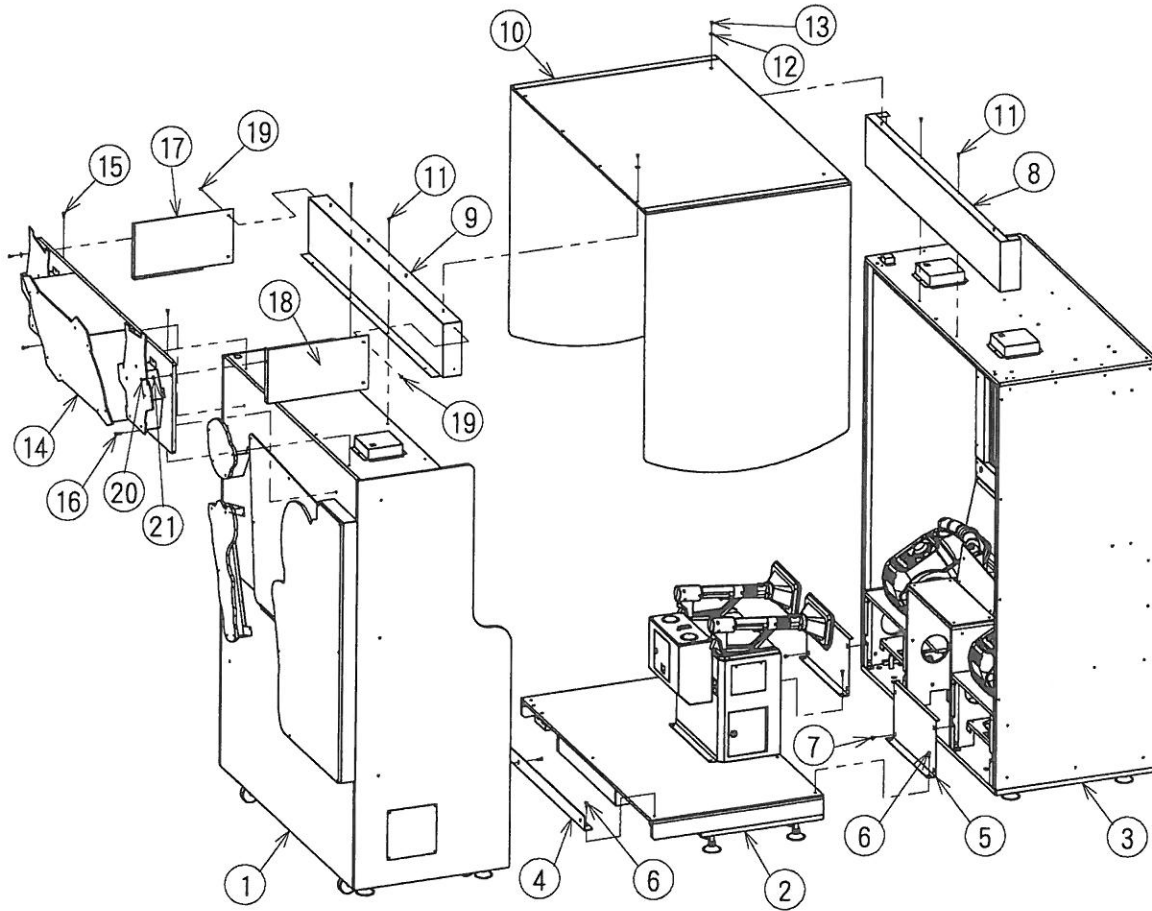
10 - Parts List

LMA TREE LIST



10 - Parts List

001 LMA ASSY (LMAAE00001*)

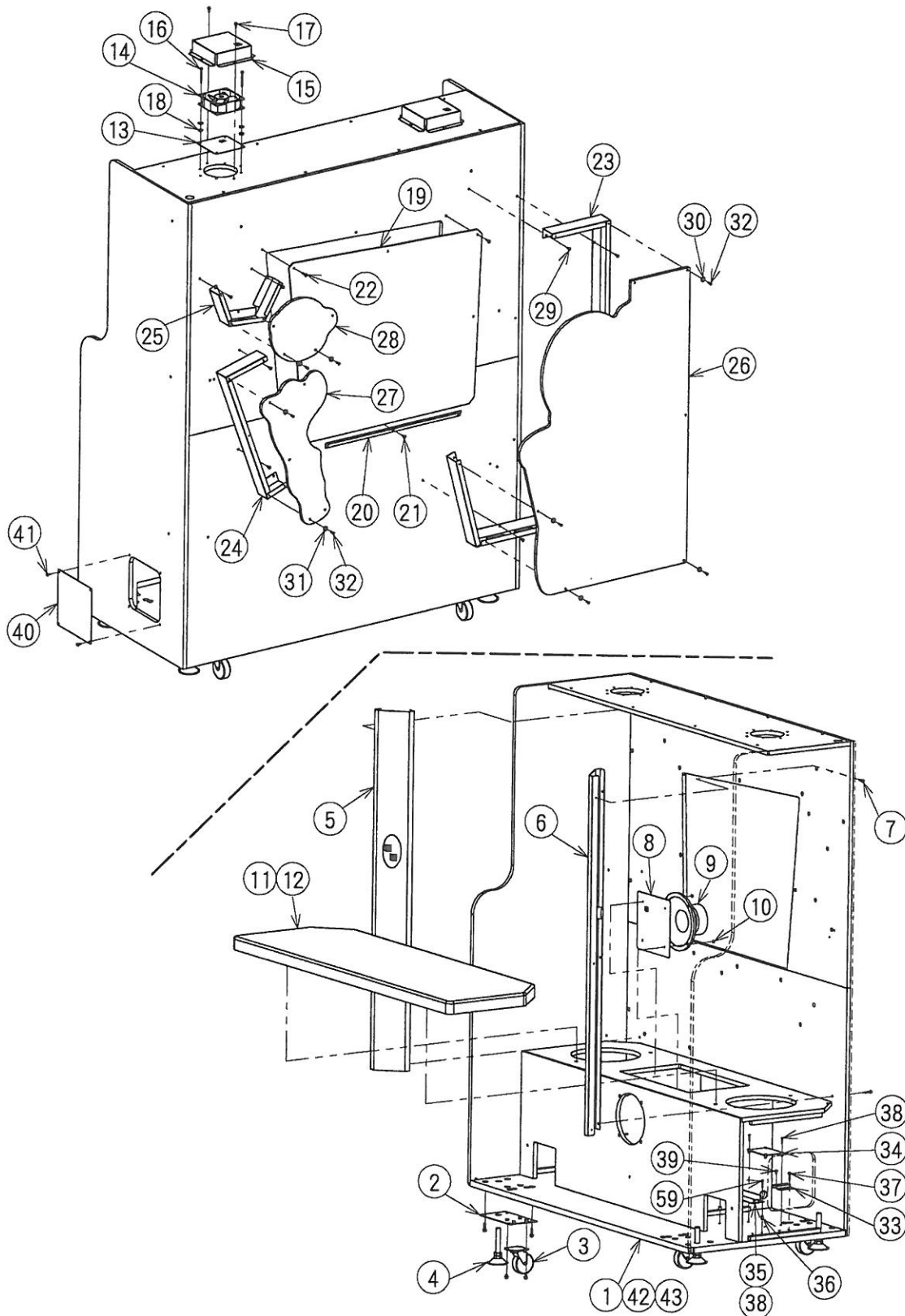


10 - Parts List

001 LMA ASSY (LMAAE00001*) LIST

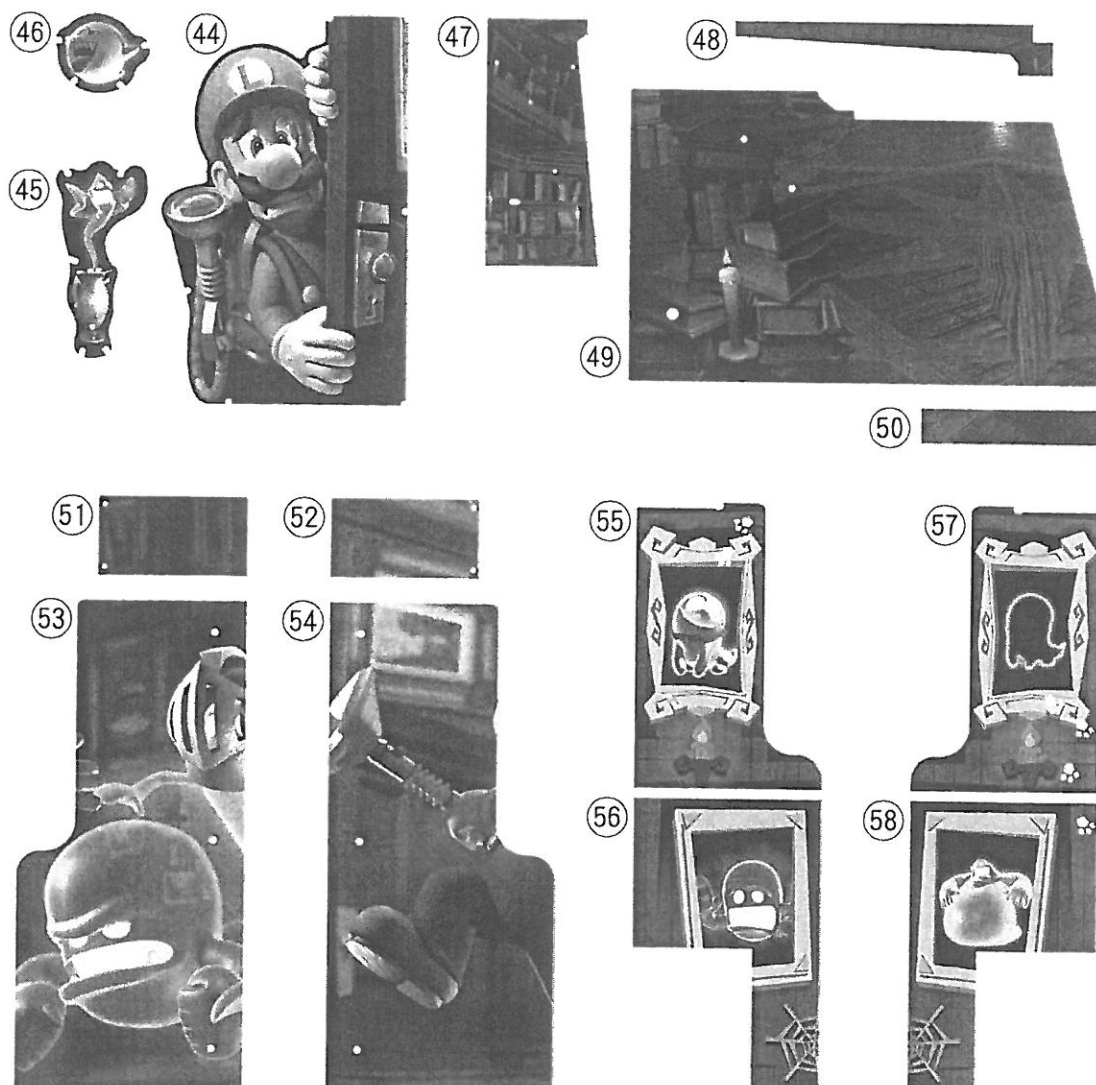
No.	PART NAME	PART NUMBER	PCS	REMARKS
1	SEAT CABINET ASSY	LMAAE00002*	1	
2	STEP CABINET ASSY	LMAAE00003*	1	
3	REAR LCD CABINET ASSY	LMAAE00004*	1	
4	STEP SEAT JOINT BRACKET	LMABA01069*	1	
5	REAR CABI FRONT JOINT	LMABA01051*	2	
6	TRUSS HEAD SCREW	M6X20	10	TRIVALENT CHROMATE (BLACK)
7	PAN HEAD SCREW (WITH PLAIN AND SPRING WASHER)	M6X12	8	TRIVALENT CHROMATE (BLACK)
8	ROOF BRACKET	LMABA01054*	1	
9	ROOF SEAT BRACKET	LMABA01055*	1	
10	ROOF CURTAIN ASSY	LMAAE00005*	1	
11	PAN HEAD SCREW (WITH PLAIN AND SPRING WASHER)	M4X16	10	TRIVALENT CHROMATE (WHITE)
12	PLAIN WASHER (SPECIAL)	φ 4. 4X φ 16Xt1.6	6	TRIVALENT CHROMATE (BLACK)
13	PAN HEAD SCREW (WITH PLAIN AND SPRING WASHER)	M4X10	6	TRIVALENT CHROMATE (BLACK)
14	BACK DESIGN UNIT ASSY	LMAAE00006*	1	
15	PAN HEAD SCREW (WITH PLAIN AND SPRING WASHER)	M5X20	4	TRIVALENT CHROMATE (WHITE)
16	PAN HEAD SCREW (WITH PLAIN AND SPRING WASHER)	M5X30	2	TRIVALENT CHROMATE (BLACK)
17	SEAT TOP SIDE PLATE L	LMABA01060*	1	
18	SEAT TOP SIDE PLATE R	LMABA01061*	1	
19	PAN HEAD SCREW (WITH PLAIN AND SPRING WASHER)	M4X10	4	TRIVALENT CHROMATE (BLACK)
20	PAN HEAD SCREW (WITH PLAIN AND SPRING WASHER)	M4X20	2	TRIVALENT CHROMATE (BLACK)
21	PLAIN WASHER (SPECIAL)	φ 4. 4X φ 16Xt1.6	2	TRIVALENT CHROMATE (BLACK)
22	OWNERS MANUAL LMA	LMAEE00001*	1	
23	-	-	-	
24	Nu1.1 SERVICE MANUAL	420-7537	1	SEGA Interactive Co., Ltd.
25	LAN CABLE	KB-T5T-20BLN	1	20m
26	LMA COIN STICKER	LMAEA15022*	1	DESIGN PARTS

002 SEAT CABINET ASSY (LMAAE00002*) 1/2



10 - Parts List

002 SEAT CABINET ASSY (LMAAE00002*) 2/2



002 SEAT CABINET ASSY (LMAAE00002*) LIST 1/2

No.	PART NAME	PART NUMBER	PCS	REMARKS
1	SEAT CABINET	LMAE01003*	1	
2	WOOD CABI CASTER PLATE	LMABA01075*	4	
3	CASTER	V20182A0000	4	
4	ADJUSTER	TM-257-6	4	
5	SEAT CABI CORNER ASSY	LMAAE00007*	1	
6	SEAT CABI CORNER CON ASSY	LMAAE00008*	1	
7	PAN HEAD SCREW (WITH PLAIN AND SPRING WASHER)	M4X25	10	TRIVALENT CHROMATE (BLACK)
8	WOOFER COVER	LMABA01078*	1	
9	WOOFER SPEAKER	W00120D1	1	
10	HEXAGON NUT WITH FLANGE	M4	4	TRIVALENT CHROMATE (WHITE)

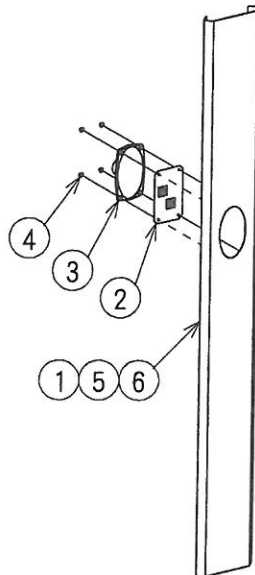
10 - Parts List

002 SEAT CABINET ASSY (LMAAE00002*) LIST 2/2

No.	PART NAME	PART NUMBER	PCS	REMARKS
11	SEAT	LMADX01001*	1	
12	KNOB BOLT	KT-B2-L30	4	
13	FAN COVER	LMABA01023*	2	
14	DC FAN	11938KA-24M-EA-00-SMP-02V-NC	2	
15	FAN TOP COVER	LMABA01024*	2	
16	PAN HEAD SCREW (WITH PLAIN AND SPRING WASHER)	M4X60	8	TRIVALENT CHROMATE (WHITE)
17	PAN HEAD SCREW (WITH PLAIN AND SPRING WASHER)	M4X16	8	TRIVALENT CHROMATE (WHITE)
18	PLAIN WASHER (SPECIAL)	φ 4. 4X φ 16Xt1.6	16	TRIVALENT CHROMATE (BLACK)
19	LMA SMOKE PLATE	LMACA15004*	1	DESIGN PARTS
20	BACK SMOKE STOPPER	LMABA01007*	1	
21	PAN HEAD SCREW (WITH PLAIN AND SPRING WASHER)	M4X16	3	TRIVALENT CHROMATE (BLACK)
22	PAN HEAD SCREW (WITH PLAIN AND SPRING WASHER)	M4X20	5	TRIVALENT CHROMATE (BLACK)
23	BACK CHARACTER BRACKET A	LMABA01001*	1	
24	BACK CHARACTER BRACKET B	LMABA01002*	1	
25	BACK CHARACTER BRACKET C	LMABA01003*	1	
26	BACK CHARACTER PANEL A	LMADA01001*	1	
27	BACK CHARACTER PANEL B	LMADA01002*	1	
28	BACK CHARACTER PANEL C	LMADA01003*	1	
29	PAN HEAD SCREW (WITH PLAIN AND SPRING WASHER)	M4X16	14	TRIVALENT CHROMATE (BLACK)
30	PLAIN WASHER (SPECIAL)	φ 4. 4X φ 16Xt1.6	6	TRIVALENT CHROMATE (BLACK)
31	PLAIN WASHER	4	9	TRIVALENT CHROMATE (BLACK)
32	HEXAGON SOCKET BUTTON HEAD SCREW	M4X18	15	TRIVALENT CHROMATE (BLACK)
33	FG BRACKET	LMABA01025*	1	
34	ASSY AMO-14067 DAMP(2)	D#RA50053X*	1	
35	POWER SUPPLY	VS75E-24	1	
36	RESIN SPACER	PS-412	4	
37	PAN HEAD SCREW (WITH PLAIN AND SPRING WASHER)	M4X25	2	TRIVALENT CHROMATE (WHITE)
38	PAN HEAD SCREW (WITH PLAIN AND SPRING WASHER)	M3X35	6	TRIVALENT CHROMATE (WHITE)
39	PAN HEAD SCREW (WITH PLAIN AND SPRING WASHER)	M4X10	2	TRIVALENT CHROMATE (WHITE)
40	CABINET HOLE COVER	LMABA01009*	2	
41	PAN HEAD SCREW (WITH PLAIN AND SPRING WASHER)	M4X20	8	TRIVALENT CHROMATE (BLACK)
42	UL CLAMP	UL-18G	6	
43	WOOD SCREW	3. 1X16	6	TRIVALENT CHROMATE (WHITE)
44	LMA CHARA STICKER L	LMAEA15001*	1	DESIGN PARTS
45	LMA CHARA STICKER R	LMAEA15002*	1	DESIGN PARTS
46	LMA CHARA STICKER T	LMAEA15003*	1	DESIGN PARTS
47	LMA BACK STICKER UPPER1	LMAEA15004*	1	DESIGN PARTS
48	LMA BACK STICKER UPPER2	LMAEA15005*	1	DESIGN PARTS
49	LMA BACK STICKER BOTTOM1	LMAEA15006*	1	DESIGN PARTS
50	LMA BACK STICKER BOTTOM2	LMAEA15007*	1	DESIGN PARTS
51	LMA BL STICKER L	LMAEA15008*	1	DESIGN PARTS
52	LMA BL STICKER R	LMAEA15009*	1	DESIGN PARTS
53	LMA SIDE STICKER L2	LMAEA15011*	1	DESIGN PARTS
54	LMA SIDE STICKER R2	LMAEA15013*	1	DESIGN PARTS
55	LMA INSIDE STICKER L2	LMAEA15015*	1	DESIGN PARTS
56	LMA INSIDE STICKER L2 BOTTOM	LMAEA15016*	1	DESIGN PARTS
57	LMA INSIDE STICKER R2	LMAEA15018*	1	DESIGN PARTS
58	LMA INSIDE STICKER R2 BOTTOM	LMAEA15019*	1	DESIGN PARTS
59	WOOD SCREW	3. 1X25	2	TRIVALENT CHROMATE (WHITE)

10 - Parts List

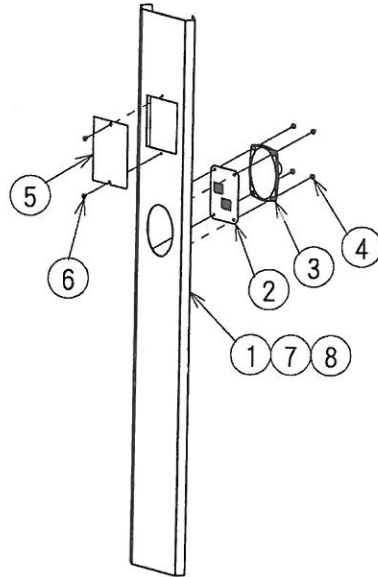
003 SEAT CABI CORNER ASSY (LMAAE00007*)



003 SEAT CABI CORNER ASSY (LMAAE00007*) LIST

No.	PART NAME	PART NUMBER	PCS	REMARKS
1	SEAT CABI CORNER PILLAR	LMABA01058*	1	
2	SF SPEAKER GUARD PLATE	MHMBAA02050*	1	
3	SPEAKER	F3E5A10-7	1	
4	HEXAGON NUT WITH FLANGE	M4	4	TRIVALENT CHROMATE (WHITE)
5	HEXAGON NUT WITH FLANGE	M4	1	TRIVALENT CHROMATE (WHITE)
6	CABLE CLAMP	NK-5N	1	

004 SEAT CABI CORNER CON ASSY (LMAAE00008*)

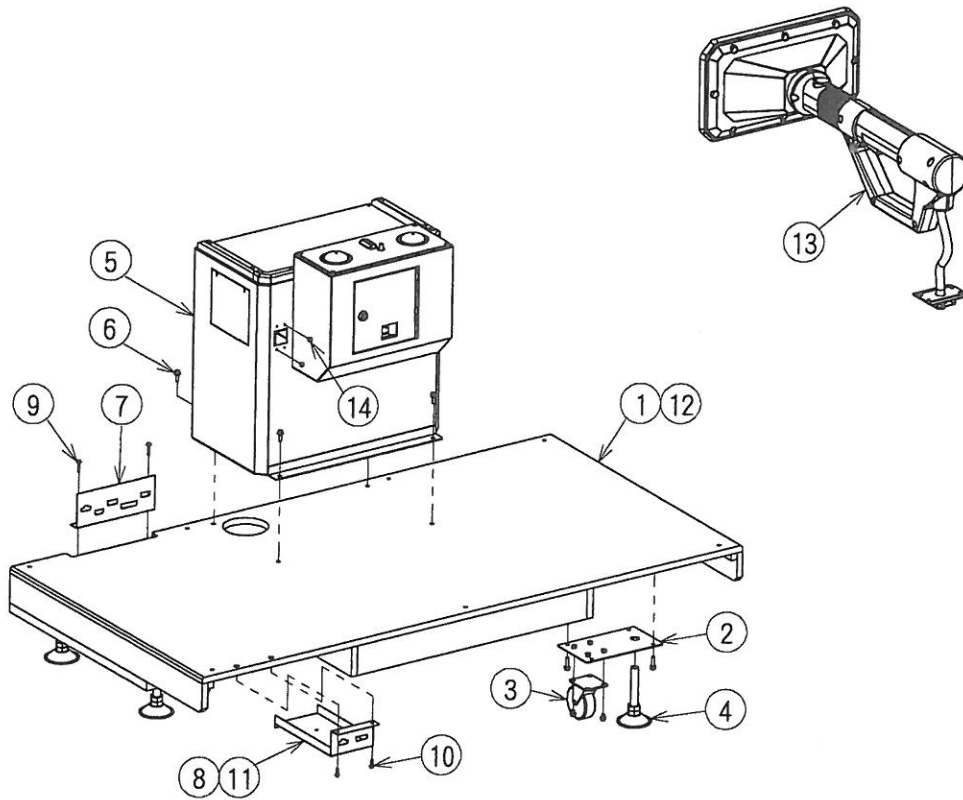


004 SEAT CABI CORNER CON ASSY (LMAAE00008*) LIST

No.	PART NAME	PART NUMBER	PCS	REMARKS
1	SEAT CABI CORNER PILLAR CON	LMABA01057*	1	
2	SF SPEAKER GUARD PLATE	MHMB02050*	1	
3	SPEAKER	F3E5A10-7	1	
4	HEXAGON NUT WITH FLANGE	M4	4	TRIVALENT CHROMATE (WHITE)
5	SEAT CABI CORNER PILLAR COVER	LMABA01059*	1	
6	TRUSS HEAD SCREW	M4X8	2	TRIVALENT CHROMATE (BLACK)
7	HEXAGON NUT WITH FLANGE	M4	2	TRIVALENT CHROMATE (WHITE)
8	CABLE CLAMP	NK-5N	1	

10 - Parts List

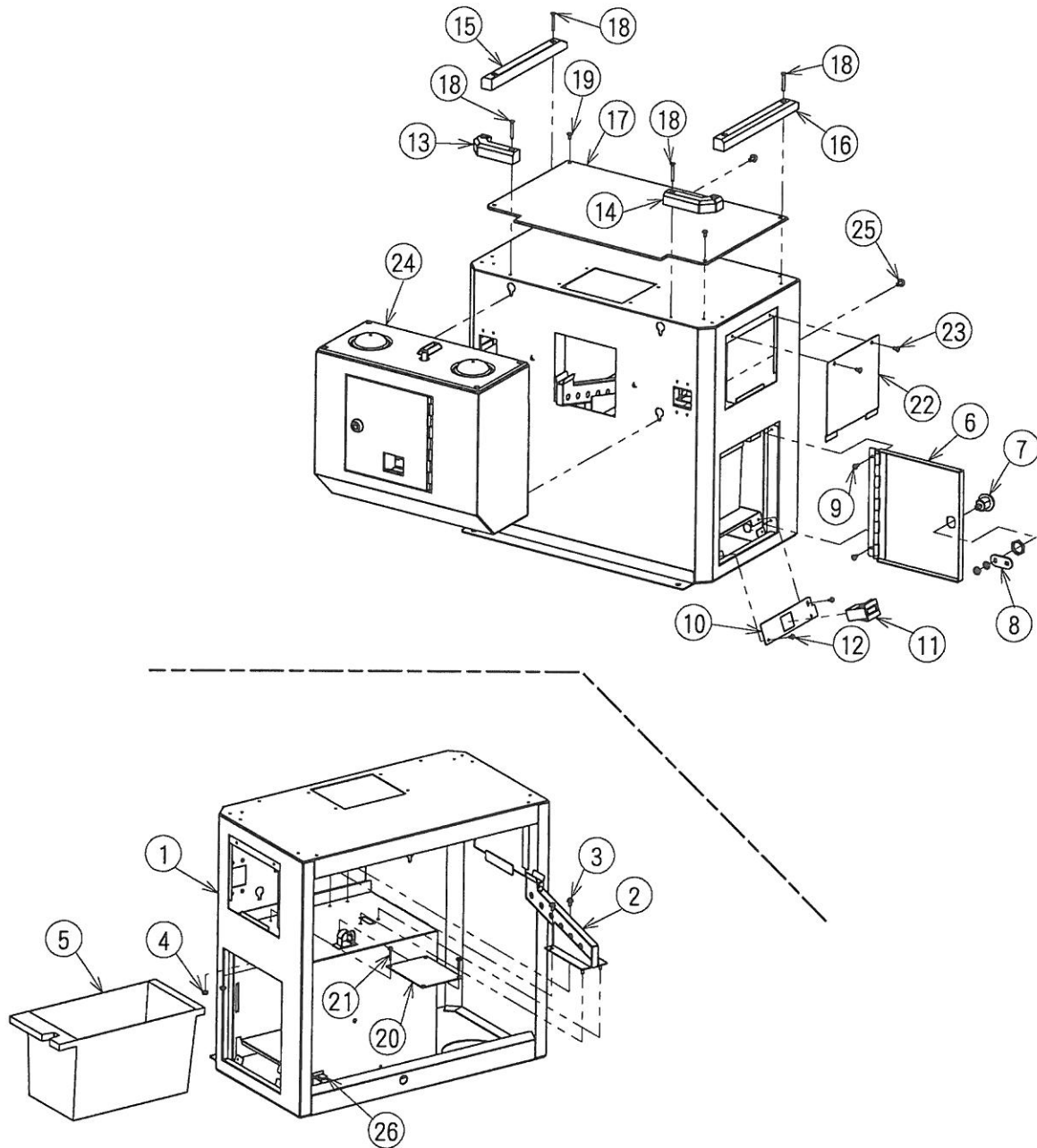
005 STEP CABINET ASSY (LMAAE00003*)



005 STEP CABINET ASSY (LMAAE00003*) LIST

No.	PART NAME	PART NUMBER	PCS	REMARKS
1	STEP CABINET	LMADE01004*	1	
2	WOOD CABI CASTER PLATE	LMABA01075*	4	
3	CASTER	V20182A0000	4	
4	ADJUSTER	TM-257-6	4	
5	STEP CENTER BOX ASSY	LMAAE00009*	1	
6	APSET HEAD BOLT (WITH PLAIN AND SPRING WASHER)	M6X20	4	TRIVALENT CHROMATE (BLACK)
7	STEP CONNECTOR PLATE A	LMABA01064*	1	
8	STEP CONNECTOR PLATE B	LMABA01065*	1	
9	PAN HEAD SCREW (WITH PLAIN AND SPRING WASHER)	M4X25	2	TRIVALENT CHROMATE (WHITE)
10	PAN HEAD SCREW (WITH PLAIN AND SPRING WASHER)	M4X16	2	TRIVALENT CHROMATE (WHITE)
11	TL CLAMP	TL-20S	1	
12	PAN HEAD SCREW (WITH PLAIN AND SPRING WASHER)	M4X10	1	TRIVALENT CHROMATE (WHITE)
13	VACUUM ASSY	LMAAE00013*	2	
14	PAN HEAD SCREW (WITH PLAIN AND SPRING WASHER)	M4X10	8	TRIVALENT CHROMATE (BLACK)

006 STEP CENTER BOX ASSY (LMAAE00009*)

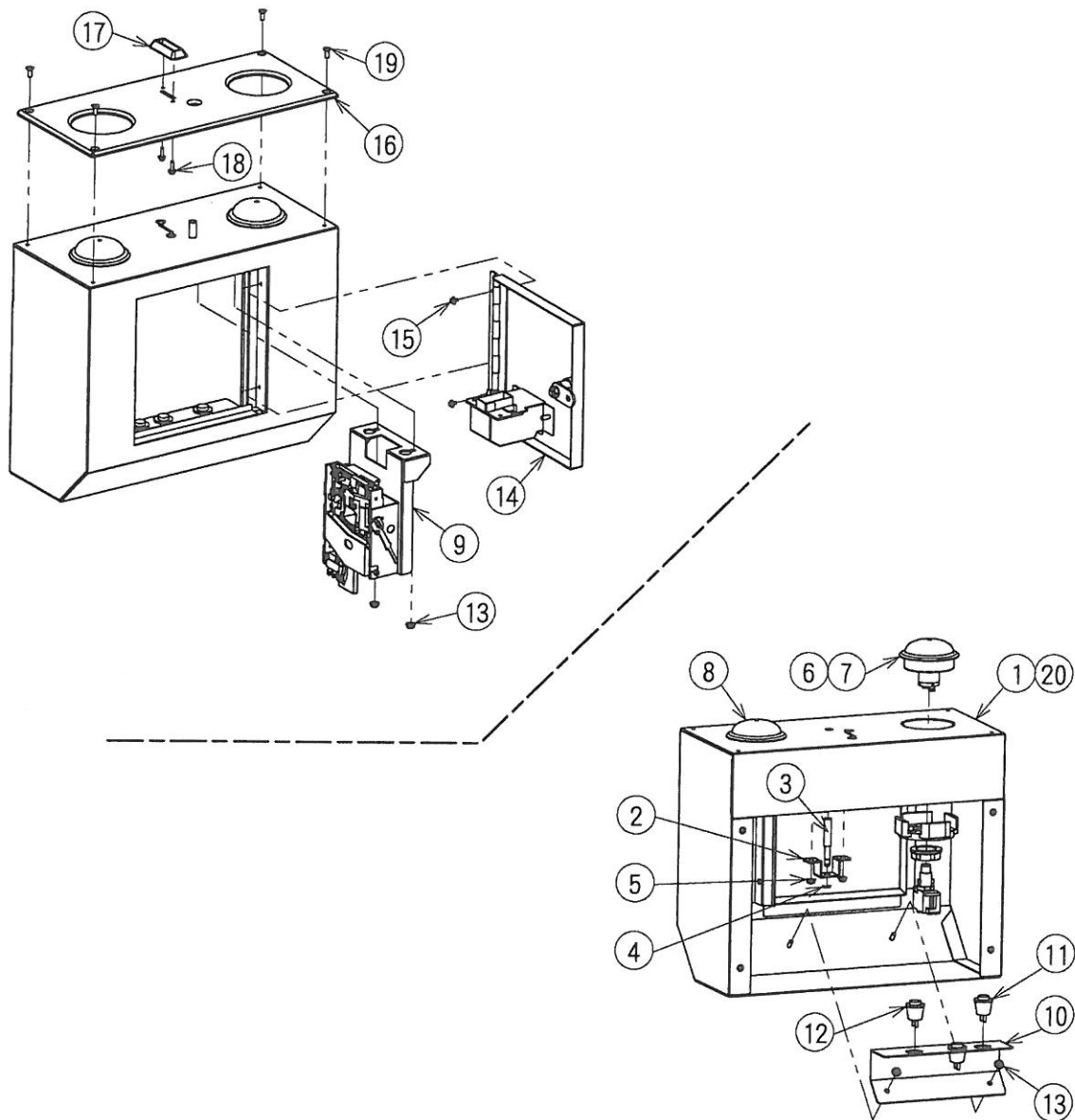


10 - Parts List

006 STEP CENTER BOX ASSY (LMAAE00009*) LIST

No.	PART NAME	PART NUMBER	PCS	REMARKS
1	STEP CENTER BOX	LMABA01063*	1	
2	COIN CHUTE	LMABA01020*	1	
3	PAN HEAD SCREW (WITH PLAIN AND SPRING WASHER)	M4X10	2	TRIVALENT CHROMATE (WHITE)
4	HEXAGON NUT WITH FLANGE	M4	2	TRIVALENT CHROMATE (WHITE)
5	COIN BOX	CS1-PCB-1-S	1	
6	CASH PANEL	LMABA01013*	1	
7	LOCK & KEY	F830-R90 K/2	1	
8	LOCK TONGUE	SY0207	1	2.6t
9	BINDING HEAD SCREW	M4X8	2	TRIVALENT CHROMATE (WHITE)
10	COUNTER PLATE	LMABA01022*	1	
11	COUNTER	FX-06PD50-DC24V	1	
12	PAN HEAD SCREW (WITH PLAIN AND SPRING WASHER)	M3X8	3	TRIVALENT CHROMATE (WHITE)
13	CENTER BOX TOP GUARD FL	LMACA01001*	1	
14	CENTER BOX TOP GUARD FR	LMACA01002*	1	
15	CENTER BOX TOP GUARD L	LMACA01003*	1	
16	CENTER BOX TOP GUARD R	LMACA01004*	1	
17	LMA CTL BASE PLATE B	LMACA15006*	1	DESIGN PARTS
18	HEXAGON SOCKET FLAT HEAD SCREW	M4X30	8	TRIVALENT CHROMATE (BLACK)
19	TRUSS HEAD SCREW	M4X8	4	TRIVALENT CHROMATE (BLACK)
20	2D GUN SENSOR SYSTEM CPU BD	OMC-GZH200N-C	1	
21	PAN HEAD SCREW (WITH PLAIN AND SPRING WASHER)	M3X16	4	TRIVALENT CHROMATE (WHITE)
22	STEP SIDE PANEL	LMABA01070*	2	
23	TRUSS HEAD SCREW	M4X8	4	TRIVALENT CHROMATE (BLACK)
24	STEP COMPANE BOX ASSY	LMAAE00010*	1	
25	PAN HEAD SCREW (WITH PLAIN AND SPRING WASHER)	M5X12	4	TRIVALENT CHROMATE (WHITE)
26	TL CLAMP	TL-20S	5	

007 STEP CONPANE BOX ASSY (LMAAE00010*)

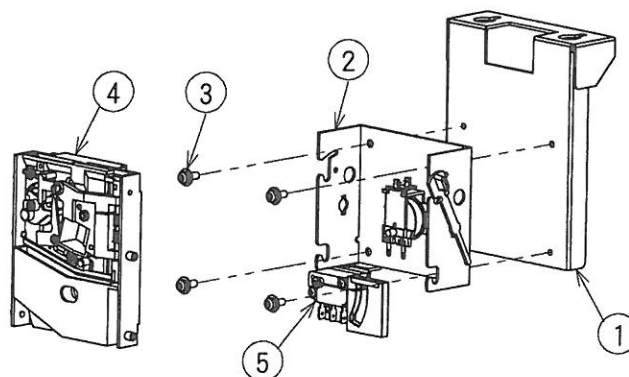


10 - Parts List

007 STEP CONPANE BOX ASSY (LMAAE00010*) LIST

No.	PART NAME	PART NUMBER	PCS	REMARKS
1	STEP CONPANE BOX	LMABA01066*	1	
2	REJECT BUTTON BRACKET	ARFBA90029*	1	
3	REJECT BUTTON	ARFBE90001*	1	
4	E RING	4	1	TRIVALENT CHROMATE (WHITE)
5	HEXAGON NUT WITH FLANGE	M4	2	TRIVALENT CHROMATE (WHITE)
6	ILLUMINATION BOTTON(GREEN)	OBSA-60UMQ-G-1F-12V	2	Illuminated_switch (red)
7	LMA BUTTON STICKER L	LMAEA15020*	1	DESIGN PARTS
8	LMA BUTTON STICKER R	LMAEA15021*	1	DESIGN PARTS
9	COIN SELECTOR ASSY	LMAAE00011*	1	
10	STEP CONPANE SW BRACKET	LMABA01068*	1	
11	BUTTON (WHITE)	SDP103C22WBJ00000	2	
12	BUTTON (RED)	SDP103C22RB	1	
13	HEXAGON NUT WITH FLANGE	M4	4	TRIVALENT CHROMATE (WHITE)
14	STEP CONPANE DOOR ASSY	LMAAE00012*	1	
15	BINDING HEAD SCREW	M4X8	2	TRIVALENT CHROMATE (WHITE)
16	LMA CTL BUTTON PLATE	LMACA15005*	1	DESIGN PARTS
17	COIN ENTRY	TO-700	1	
18	PAN HEAD SCREW (WITH PLAIN AND SPRING WASHER)	M3X12	2	TRIVALENT CHROMATE (WHITE)
19	HEXAGON SOCKET FLAT HEAD SCREW	M4X12	4	CHROMIUM PLATING (STEEL)
20	UL CLAMP	UL-18G	3	

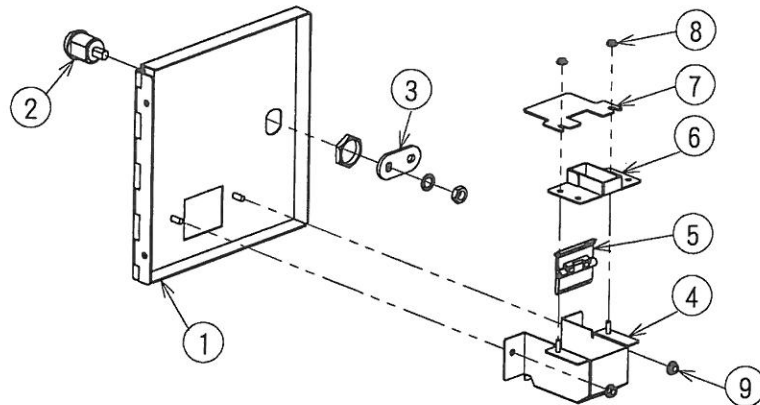
008 COIN SELECTOR ASSY (LMAAE00011*)



008 COIN SELECTOR ASSY (LMAAE00011*) LIST

No.	PART NAME	PART NUMBER	PCS	REMARKS
1	COIN SELECTOR BRACKET	LMABA01021*	1	
2	CHANNEL BRACKET	CB-81MB-DC24	1	MICRO SWITCH INCLUDED
3	PAN HEAD SCREW (WITH PLAIN AND SPRING WASHER)	M4X10	4	TRIVALENT CHROMATE (WHITE)
4	COIN SELECTOR	AD-81P2	1	
5	MICRO SWITCH	V4-5210M-A	1	

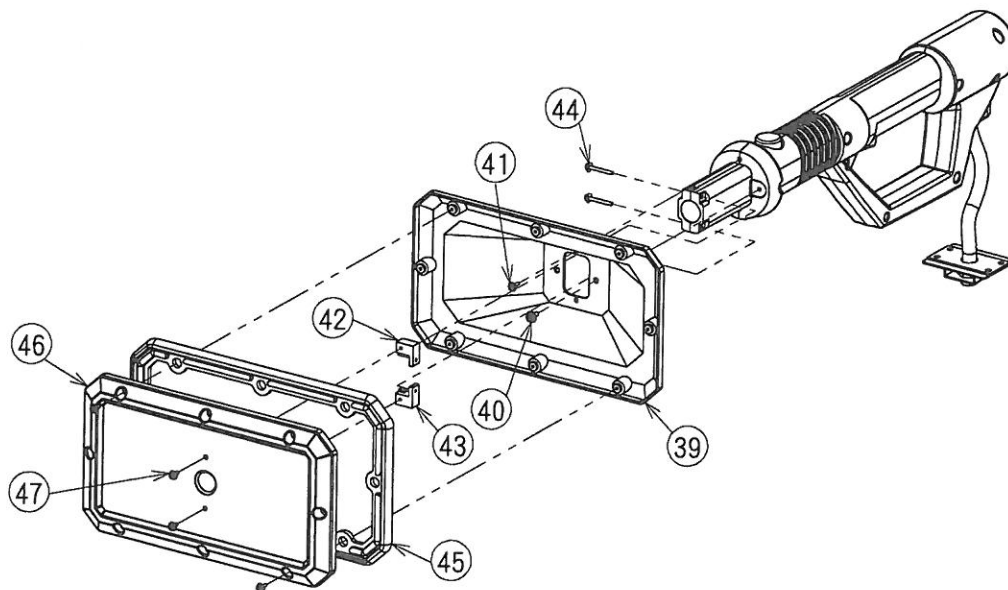
009 STEP CONPANE DOOR ASSY (LMAAE00012*)



009 STEP CONPANE DOOR ASSY (LMAAE00012*) LIST

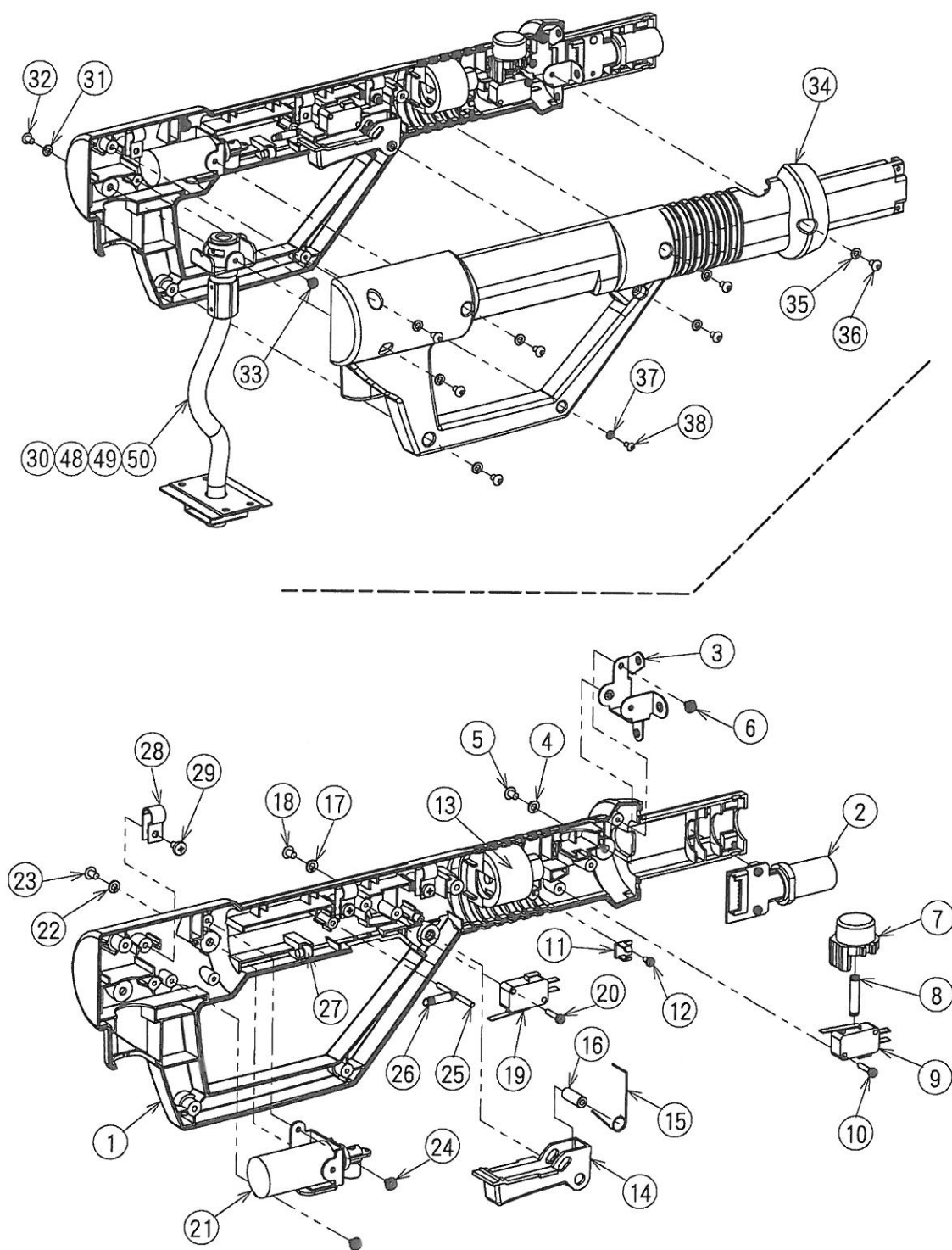
No.	PART NAME	PART NUMBER	PCS	REMARKS
1	STEP CONPANE DOOR	LMABA01067*	1	
2	LOCK & KEY	F750-MSDS K/2	1	
3	LOCK TONGUE	SY0207	1	2. 6t
4	CANCEL CHUTE BASE	LMABA01010*	1	
5	CANCEL COVER	PFB-730 PFB-1200-0	1	
6	CANCEL CHUTE	LMABA01012*	1	
7	CANCEL CHUTE FLAP	LMABA01011*	1	
8	HEXAGON NUT WITH FLANGE	M3	2	TRIVALENT CHROMATE (WHITE)
9	HEXAGON NUT WITH FLANGE	M4	2	TRIVALENT CHROMATE (WHITE)

010 VACUUM ASSY (LMAAE00013*) 1/2



10 - Parts List

010 VACUUM ASSY (LMAAE00013*) 2/2

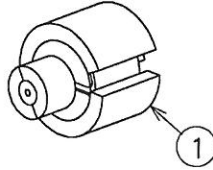


010 VACUUM ASSY (LMAAE00013*) LIST

No.	PART NAME	PART NUMBER	PCS	REMARKS
1	CONTROLLER COVER(L) SET	LMASP00001*	1	
2	2D GUN SENSOR SYSTEM RECEIVER UNIT SET	LMASP00005*	1	
3	HEAD BKT(A)	LMABA05001*	1	
4	SPRING LOCK WASHER	4	1	TRIVALENT CHROMATE (WHITE)
5	HEXAGON SOCKET HEAD SCREW (WITH NYLON)	M4X8	1	TRIVALENT CHROMATE (WHITE)
6	PAN HEAD SCREW (WITH PLAIN AND SPRING WASHER)	M3X8	1	TRIVALENT CHROMATE (WHITE)
7	SWITCH	LMACJ05005*	1	
8	COIL SPRING	C148	1	
9	SWITCH	V-152-1A5	1	
10	PAN HEAD SCREW (WITH SPRING WASHER)	M3X14	2	TRIVALENT CHROMATE (WHITE)
11	MINI CLAMP	MB-3	1	
12	PAN HEAD SCREW	M2. 5X5	1	TRIVALENT CHROMATE (WHITE)
13	MOTOR ASSY	LMAAE00014*	1	
14	TRIGGER	LMACJ05006*	1	
15	TRIGGER SPRING	LMABN05001*	1	
16	TRIGGER SHAFT	LMABE05001*	1	
17	SPRING LOCK WASHER	4	1	TRIVALENT CHROMATE (WHITE)
18	HEXAGON SOCKET HEAD SCREW (WITH NYLON)	M4X8	1	TRIVALENT CHROMATE (WHITE)
19	SWITCH	V-152-1A5	1	
20	PAN HEAD SCREW (WITH SPRING WASHER)	M3X14	2	TRIVALENT CHROMATE (WHITE)
21	SOLENOID ASSY	LMAAE00015*	1	
22	SPRING LOCK WASHER	4	1	TRIVALENT CHROMATE (WHITE)
23	HEXAGON SOCKET HEAD SCREW (WITH NYLON)	M4X8	1	TRIVALENT CHROMATE (WHITE)
24	PAN HEAD SCREW (WITH PLAIN AND SPRING WASHER)	M3X8	3	TRIVALENT CHROMATE (WHITE)
25	SPRING SHAFT	LMABE05002*	1	
26	SOLENOID SPRING	LMABN05003*	1	
27	RUBBER	DXLK8-V5-T5-L8	1	SHORE HARDNESS A50
28	CABLE CLAMP	NK-5N	3	
29	PAN HEAD SCREW (WITH PLAIN AND SPRING WASHER)	M4X10	3	TRIVALENT CHROMATE (WHITE)
30	CONTROLLER CABLE	D#KA531990*	1	
31	SPRING LOCK WASHER	4	1	TRIVALENT CHROMATE (WHITE)
32	HEXAGON SOCKET HEAD SCREW (WITH NYLON)	M4X8	1	TRIVALENT CHROMATE (WHITE)
33	PAN HEAD SCREW (WITH PLAIN AND SPRING WASHER)	M3X8	1	TRIVALENT CHROMATE (WHITE)
34	CONTROLLER COVER(R) SET	LMASP00002*	1	
35	SPRING LOCK WASHER	4	7	TRIVALENT CHROMATE (WHITE)
36	HEXAGON SOCKET HEAD SCREW (WITH NYLON)	M4X8	1	TRIVALENT CHROMATE (WHITE)
37	SPRING LOCK WASHER	3	1	TRIVALENT CHROMATE (WHITE)
38	HEXAGON SOCKET BUTTON HEAD SCREW	M3X6	1	TRIVALENT CHROMATE (WHITE)
39	HEAD(REAR)	LMACJ05002*	1	
40	PAN HEAD SCREW (WITH PLAIN AND SPRING WASHER)	M4X10	2	
41	PAN HEAD SCREW (WITH PLAIN AND SPRING WASHER)	M3X10	2	TRIVALENT CHROMATE (WHITE)
42	HEAD BKT(B)	LMACA05001*	1	TRIVALENT CHROMATE (WHITE)
43	HEAD BKT(C)	LMACA05002*	1	
44	PAN HEAD SCREW (WITH PLAIN AND SPRING WASHER)	M3X25	2	TRIVALENT CHROMATE (WHITE)
45	HEAD CUSHION	LMACJ05007*	1	CR RUBBER SPONGE
46	HEAD(FRONT)	LMACJ05001*	1	
47	PAN HEAD SCREW (WITH PLAIN AND SPRING WASHER)	M3X8	10	TRIVALENT CHROMATE (BLACK)
48	CABLE CLAMP	TRCV-160L	2	WHITE
49	TARPOLIN	TH3522	1	80mm x 120mm x 0. 35mm
50	CABLE CLAMP	SNP-10-HSO	2	BLACK

10 - Parts List

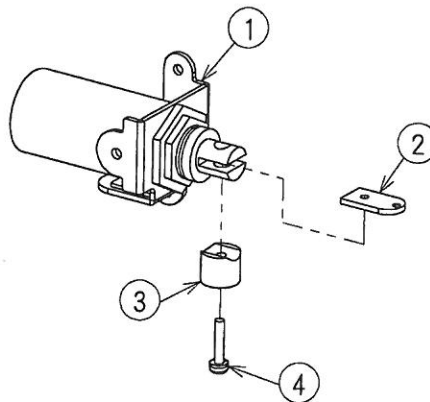
011 MOTOR ASSY (LMAAE00014*)



011 MOTOR ASSY (LMAAE00014*) LIST

No.	PART NAME	PART NUMBER	PCS	REMARKS
1	VIBRATION MOTOR SET	LMASP00003*	1	

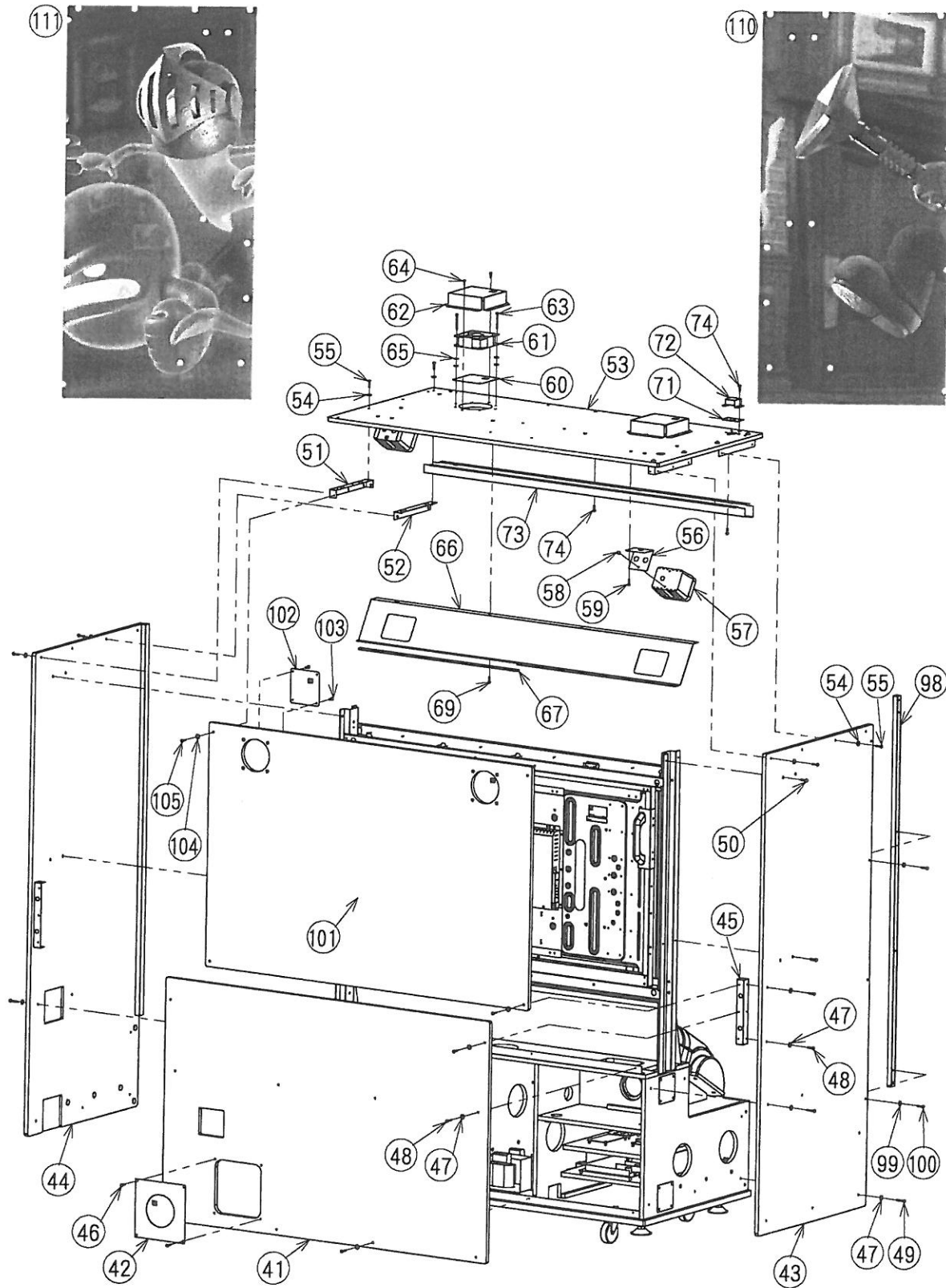
012 SOLENOID ASSY (LMAAE00015*)



012 SOLENOID ASSY (LMAAE00015*) LIST

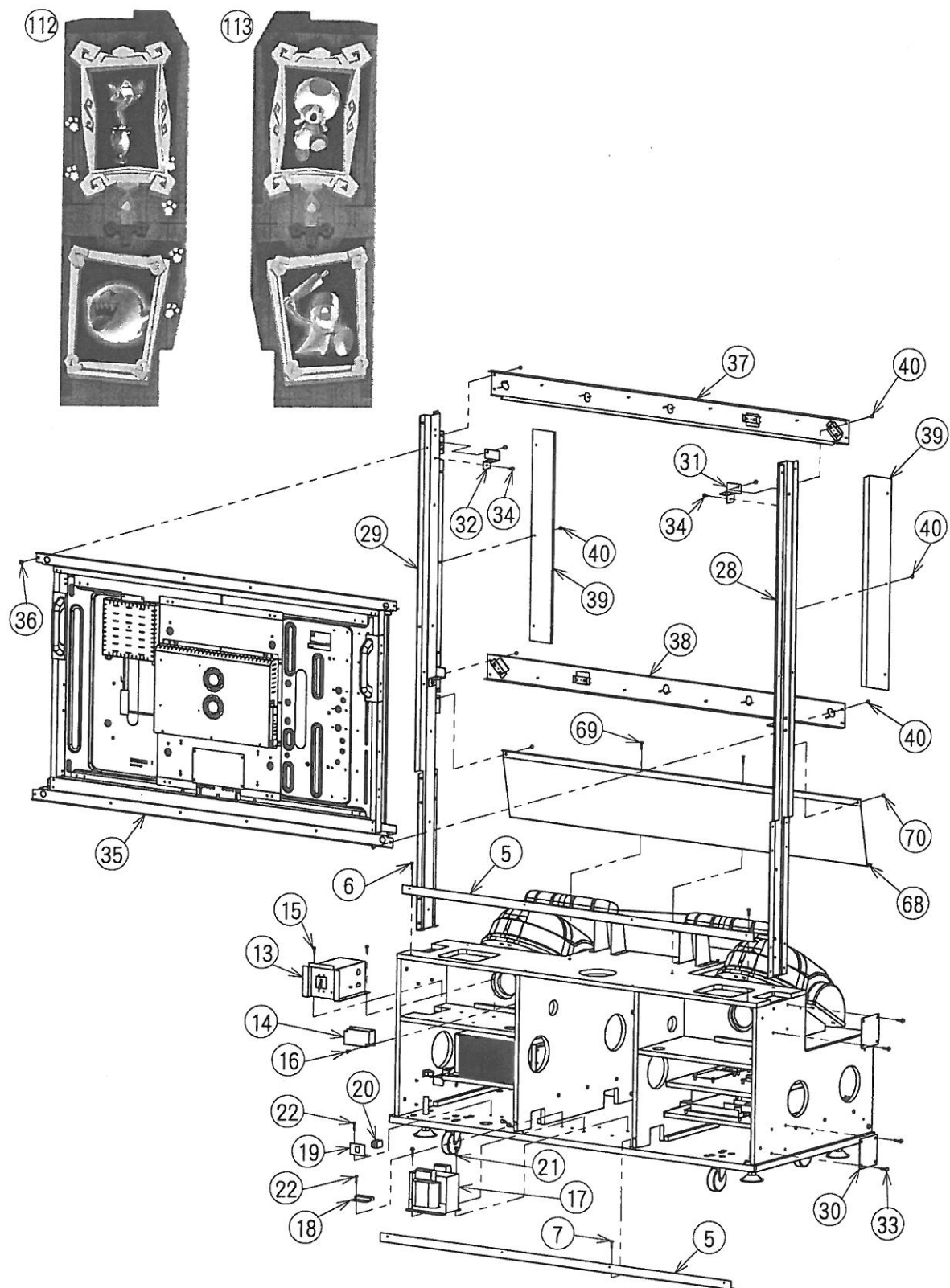
No.	PART NAME	PART NUMBER	PCS	REMARKS
1	DC SOLENOID SET	LMASP00004*	1	
2	SPRING BKT	LMABA05005*	1	
3	PLUNGER GUIDE	LMACE05001*	1	
4	PAN HEAD SCREW (WITH SPRING WASHER)	M3X14	1	TRIVALENT CHROMATE (WHITE)

013 REAR LCD CABINET ASSY (LMAAE00004*) 1/3

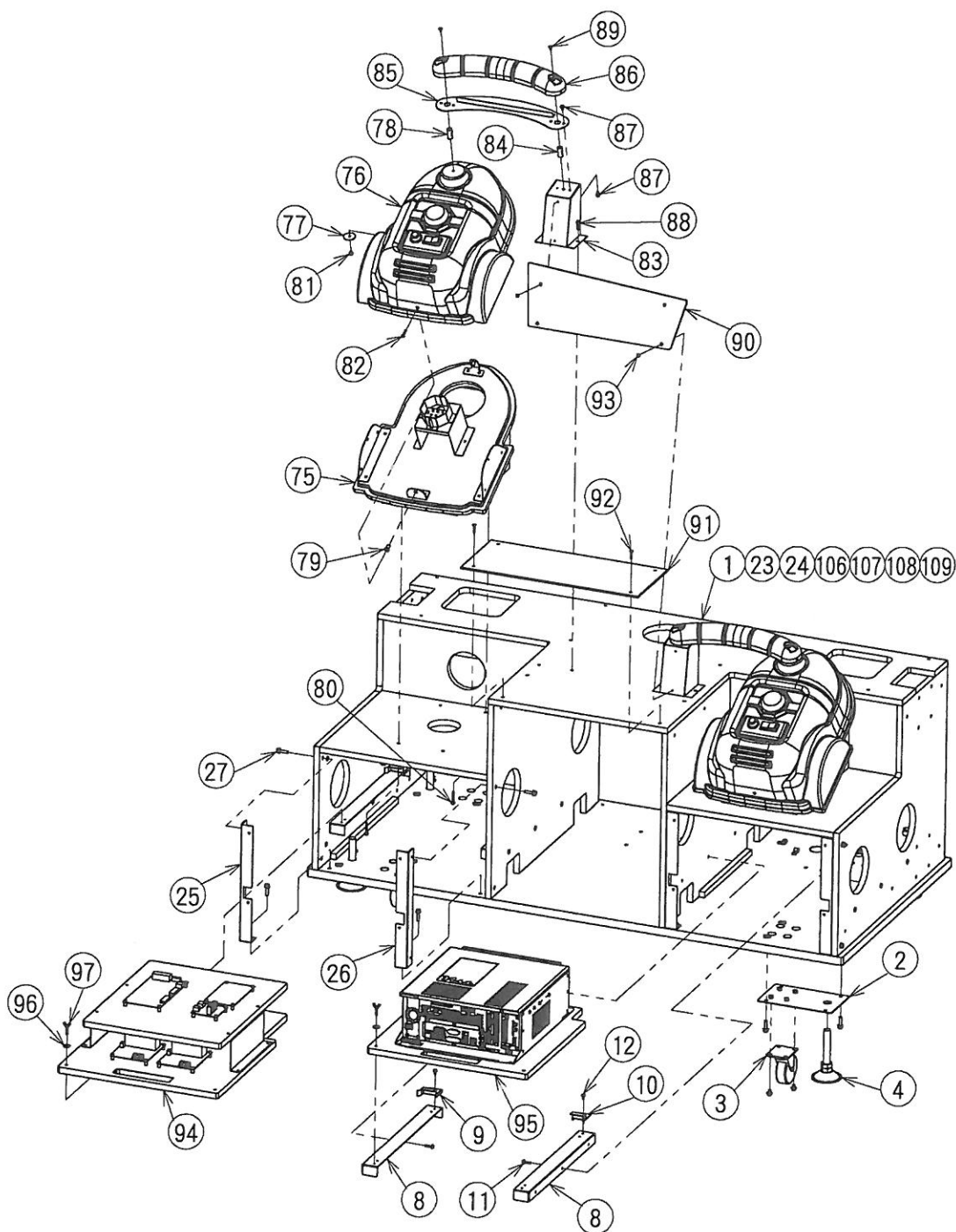


10 - Parts List

013 REAR LCD CABINET ASSY (LMAAE00004*) 2/3



013 REAR LCD CABINET ASSY (LMAAE00004*) 3/3



10 - Parts List

013 REAR LCD CABINET ASSY (LMAAE00004*) LIST 1/3

No.	PART NAME	PART NUMBER	PCS	REMARKS
1	REAR WOOD CABINET	LMADE01002*	1	
2	WOOD CABI CASTER PLATE	LMABA01075*	4	
3	CASTER	V20182A0000	4	
4	ADJUSTER	TM-257-6	4	
5	REAR CABI BACK BRACKET	LMABA01046*	2	
6	PAN HEAD SCREW (WITH PLAIN AND SPRING WASHER)	M4X20	4	TRIVALENT CHROMATE (WHITE)
7	PAN HEAD SCREW (WITH PLAIN AND SPRING WASHER)	M4X25	4	TRIVALENT CHROMATE (WHITE)
8	REAR CABI PCB GUIDE BKT	LMABA01052*	4	
9	REAR CABI BOARD STOPPER L	LMABA01047*	2	
10	REAR CABI BOARD STOPPER R	LMABA01048*	2	
11	PAN HEAD SCREW (WITH PLAIN AND SPRING WASHER)	M4X20	12	TRIVALENT CHROMATE (WHITE)
12	PAN HEAD SCREW (WITH PLAIN AND SPRING WASHER)	M4X10	8	TRIVALENT CHROMATE (WHITE)
13	AC SWITCH BOX ASSY	LMAAE00016*	1	
14	NOISE FILTER	RSHN-2010L	1	
15	PAN HEAD SCREW (WITH PLAIN AND SPRING WASHER)	M4X20	4	TRIVALENT CHROMATE (WHITE)
16	PAN HEAD SCREW (WITH PLAIN AND SPRING WASHER)	M4X16	2	TRIVALENT CHROMATE (WHITE)
17	ISOLATION TRANSFORMER	A-750E-586	1	
18	FG BRACKET	LMABA01025*	1	
19	LAN BRACKET	LMABA01056*	1	
20	RJ45 CONNECTOR	NW080-88S-C5R	1	
21	APSET HEAD BOLT (WITH PLAIN AND SPRING WASHER)	M5X25	4	TRIVALENT CHROMATE (WHITE)
22	PAN HEAD SCREW (WITH PLAIN AND SPRING WASHER)	M4X25	4	TRIVALENT CHROMATE (WHITE)
23	CABLE CLAMP	NK-5N	2	
24	PAN HEAD SCREW (WITH PLAIN AND SPRING WASHER)	M4X25	2	TRIVALENT CHROMATE (WHITE)
25	REAR CABI FRONT BKT L	LMABA01049*	2	
26	REAR CABI FRONT BKT R	LMABA01050*	2	
27	APSET HEAD BOLT (WITH PLAIN AND SPRING WASHER)	M6X25	12	TRIVALENT CHROMATE (WHITE)
28	LCD PILLAR FRAME L	LMABA01035*	1	
29	LCD PILLAR FRAME R	LMABA01036*	1	
30	LCD FRAME STOPPER PL	LMABA01029*	4	
31	LCD HOLDER L	LMABA01033*	2	
32	LCD HOLDER R	LMABA01034*	2	
33	PAN HEAD SCREW (WITH PLAIN AND SPRING WASHER)	M5X25	16	TRIVALENT CHROMATE (BLACK)
34	PAN HEAD SCREW (WITH PLAIN AND SPRING WASHER)	M5X12	8	TRIVALENT CHROMATE (WHITE)
35	LCD UNIT ASSY	LMAAE00018*	1	
36	PAN HEAD SCREW (WITH PLAIN AND SPRING WASHER)	M5X12	4	TRIVALENT CHROMATE (WHITE)
37	LED BD UNIT BASE T ASSY	LMAAE00019*	1	
38	LED BD UNIT BASE U ASSY	LMAAE00020*	1	
39	LCD SIDE BLIND	LMABA01037*	2	
40	PAN HEAD SCREW (WITH PLAIN AND SPRING WASHER)	M4X10	14	TRIVALENT CHROMATE (BLACK)
41	REAR CABI BACK WOOD U	LMADA01010*	1	
42	CABINET HOLE BACK COVER	LMABA01008*	1	
43	REAR CABI SIDE WOOD L	LMADA01011*	1	
44	REAR CABI SIDE WOOD R	LMADA01012*	1	
45	WOOD CABI JOINT BRACKET A	LMABA01076*	2	
46	PAN HEAD SCREW (WITH PLAIN AND SPRING WASHER)	M4X20	4	TRIVALENT CHROMATE (BLACK)
47	PLAIN WASHER (SPECIAL)	φ 4. 4X φ 16Xt1.6	26	TRIVALENT CHROMATE (BLACK)
48	PAN HEAD SCREW (WITH PLAIN AND SPRING WASHER)	M4X25	14	TRIVALENT CHROMATE (BLACK)
49	PAN HEAD SCREW (WITH PLAIN AND SPRING WASHER)	M4X35	12	TRIVALENT CHROMATE (BLACK)
50	PAN HEAD SCREW (WITH PLAIN AND SPRING WASHER)	M5X25	8	TRIVALENT CHROMATE (BLACK)

10 - Parts List

013 REAR LCD CABINET ASSY (LMAAE00004*) LIST 2/3

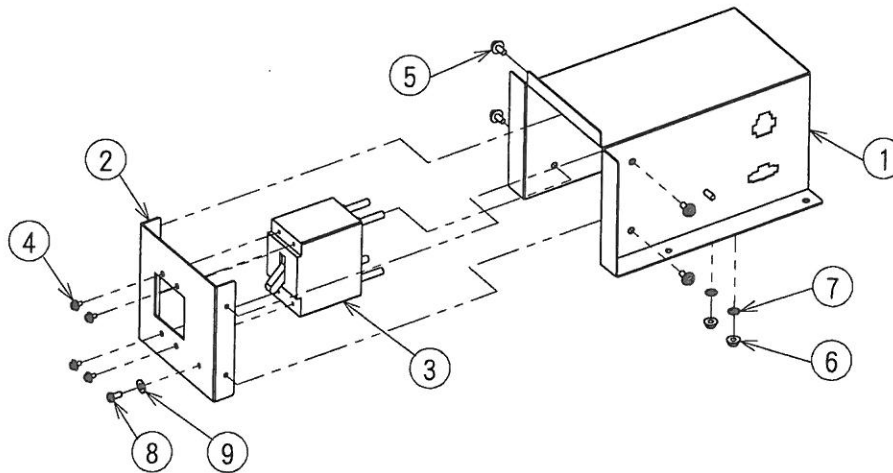
No.	PART NAME	PART NUMBER	PCS	REMARKS
51	WOOD CABI JOINT BRACKET A	LMABA01076*	2	
52	WOOD CABI JOINT BRACKET B	LMABA01077*	2	
53	REAR CABI TOP WOOD	LMADA01013*	1	
54	PLAIN WASHER (SPECIAL)	φ 4. 4X φ 16Xt1. 6	16	TRIVALENT CHROMATE (BLACK)
55	PAN HEAD SCREW (WITH PLAIN AND SPRING WASHER)	M4X25	16	TRIVALENT CHROMATE (BLACK)
56	MAIN SPEAKER BKT	LMABA01044*	2	
57	SPEAKER	S003080D0	2	
58	PAN HEAD SCREW (WITH PLAIN AND SPRING WASHER)	M5X12	4	TRIVALENT CHROMATE (WHITE)
59	PAN HEAD SCREW (WITH PLAIN AND SPRING WASHER)	M4X20	4	TRIVALENT CHROMATE (WHITE)
60	FAN COVER	LMABA01023*	2	
61	DC FAN	11938KA-24M-EA-00-SMP-02V-NC	2	
62	FAN TOP COVER	LMABA01024*	2	
63	PAN HEAD SCREW (WITH PLAIN AND SPRING WASHER)	M4X60	8	TRIVALENT CHROMATE (WHITE)
64	PAN HEAD SCREW (WITH PLAIN AND SPRING WASHER)	M4X16	8	TRIVALENT CHROMATE (WHITE)
65	PLAIN WASHER (SPECIAL)	φ 4. 4X φ 16Xt1. 6	16	TRIVALENT CHROMATE (BLACK)
66	LCD TOP COVER BASE	LMABA01038*	1	
67	LCD TOP COVER RUBBER	LMADJ01001*	3	
68	LCD UNDER COVER BASE	LMABA01040*	1	
69	PAN HEAD SCREW (WITH PLAIN AND SPRING WASHER)	M4X20	8	TRIVALENT CHROMATE (BLACK)
70	PAN HEAD SCREW (WITH PLAIN AND SPRING WASHER)	M4X10	2	TRIVALENT CHROMATE (BLACK)
71	TOP CONNECTOR PL	LMABA01079*	1	
72	TOP CONNECTOR PL COVER	LMABA01080*	1	
73	IN TOP LED ASSY	LMAAE00021*	1	
74	PAN HEAD SCREW (WITH PLAIN AND SPRING WASHER)	M4X20	7	TRIVALENT CHROMATE (BLACK)
75	CLEANER MAIN BODY BOX ASSY	LMAAE00017*	2	
76	CLEANER MAIN BODY	LMACJ01002*	2	
77	WIDE WASHER	LMABA01074*	2	
78	CLEANER SHAFT	LMABE01001*	2	
79	WELL NUT	C-440	4	
80	PAN HEAD SCREW (WITH PLAIN AND SPRING WASHER)	M4X30	8	TRIVALENT CHROMATE (BLACK)
81	PAN HEAD SCREW (WITH PLAIN AND SPRING WASHER)	M4X10	2	TRIVALENT CHROMATE (WHITE)
82	TRUSS HEAD SCREW	M4X20	4	TRIVALENT CHROMATE (BLACK)
83	CLEANER HOSE STAY BASE	LMABA01016*	2	
84	CLEANER SHAFT	LMABE01001*	2	
85	CLEANER HOSE BRACKET	LMABA01015*	2	
86	CLEANER HOSE	LMACJ01001*	2	
87	PAN HEAD SCREW (WITH PLAIN AND SPRING WASHER)	M4X10	6	TRIVALENT CHROMATE (WHITE)
88	PAN HEAD SCREW (WITH PLAIN AND SPRING WASHER)	M4X20	4	TRIVALENT CHROMATE (BLACK)
89	TRUSS HEAD SCREW	M4X8	4	TRIVALENT CHROMATE (BLACK)
90	LMA CTL POP PLATE	LMACA15008*	1	DESIGN PARTS
91	LMA CTL BASE PLATE S	LMACA15007*	1	DESIGN PARTS
92	TRUSS HEAD SCREW	M4X20	4	TRIVALENT CHROMATE (BLACK)
93	TRUSS HEAD SCREW	M4X8	4	TRIVALENT CHROMATE (BLACK)
94	PCB UNIT ASSY	LMAAE00022*	1	
95	PC UNIT ASSY	LMAAE00023*	1	
96	PLAIN WASHER (SPECIAL)	φ 4. 4X φ 16Xt1. 6	4	TRIVALENT CHROMATE (BLACK)
97	WING BOLT	M4X25	4	TRIVALENT CHROMATE (WHITE)
98	REAR CABI SUB PILLAR	LMABA01053*	2	
99	PLAIN WASHER (SPECIAL)	φ 4. 4X φ 16Xt1. 6	8	TRIVALENT CHROMATE (BLACK)
100	PAN HEAD SCREW (WITH PLAIN AND SPRING WASHER)	M4X25	8	TRIVALENT CHROMATE (BLACK)

10 - Parts List

013 REAR LCD CABINET ASSY (LMAAE00004*) LIST 3/3

No.	PART NAME	PART NUMBER	PCS	REMARKS
101	REAR CABI BACK WOOD T	LMADA01009*	1	
102	FAN COVER	LMABA01023*	2	
103	PAN HEAD SCREW (WITH PLAIN AND SPRING WASHER)	M4X16	8	TRIVALENT CHROMATE (WHITE)
104	PLAIN WASHER (SPECIAL)	Φ 4.4XΦ 16Xt1.6	4	TRIVALENT CHROMATE (BLACK)
105	PAN HEAD SCREW (WITH PLAIN AND SPRING WASHER)	M4X25	4	TRIVALENT CHROMATE (BLACK)
106	TL CLAMP	TL-20S	14	
107	UL CLAMP	UL-18G	12	
108	WOOD SCREW	3.1X16	12	TRIVALENT CHROMATE (WHITE)
109	PAN HEAD SCREW (WITH PLAIN AND SPRING WASHER)	M4X10	6	TRIVALENT CHROMATE (WHITE)
110	LMA SIDE STICKER L1	LMAEA15010*	1	DESIGN PARTS
111	LMA SIDE STICKER R1	LMAEA15012*	1	DESIGN PARTS
112	LMA INSIDE STICKER L1	LMAEA15014*	1	DESIGN PARTS
113	LMA INSIDE STICKER R1	LMAEA15017*	1	DESIGN PARTS

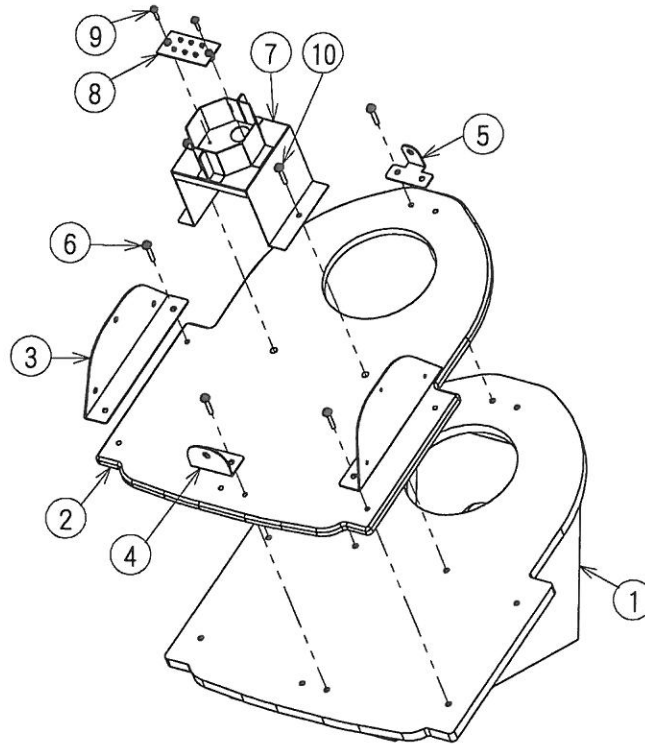
014 AC SWITCH BOX ASSY (LMAAE00016*)



014 AC SWITCH BOX ASSY (LMAAE00016*) LIST

No.	PART NAME	PART NUMBER	PCS	REMARKS
1	SWITCH BRACKET	LMABA01071*	1	
2	SWITCH PLATE	LMABA01072*	1	
3	PROTECTOR	IM-2R-11-A6-MD	1	
4	PAN HEAD SCREW (WITH PLAIN AND SPRING WASHER)	M3X6	4	TRIVALENT CHROMATE (WHITE)
5	PAN HEAD SCREW (WITH PLAIN AND SPRING WASHER)	M4X10	4	TRIVALENT CHROMATE (WHITE)
6	HEXAGON NUT WITH FLANGE	M4	2	NICKEL PLATING (BRASS)
7	TOOTHED LOCK WASHER (OUTSIDE)	4	2	STAINLESS STEEL
8	PAN HEAD SCREW	M4X8	1	NICKEL PLATING (BRASS)
9	PLAIN WASHER	4	1	STAINLESS STEEL

015 CLEANER MAIN BODY BOX ASSY (LMAAE00017*)

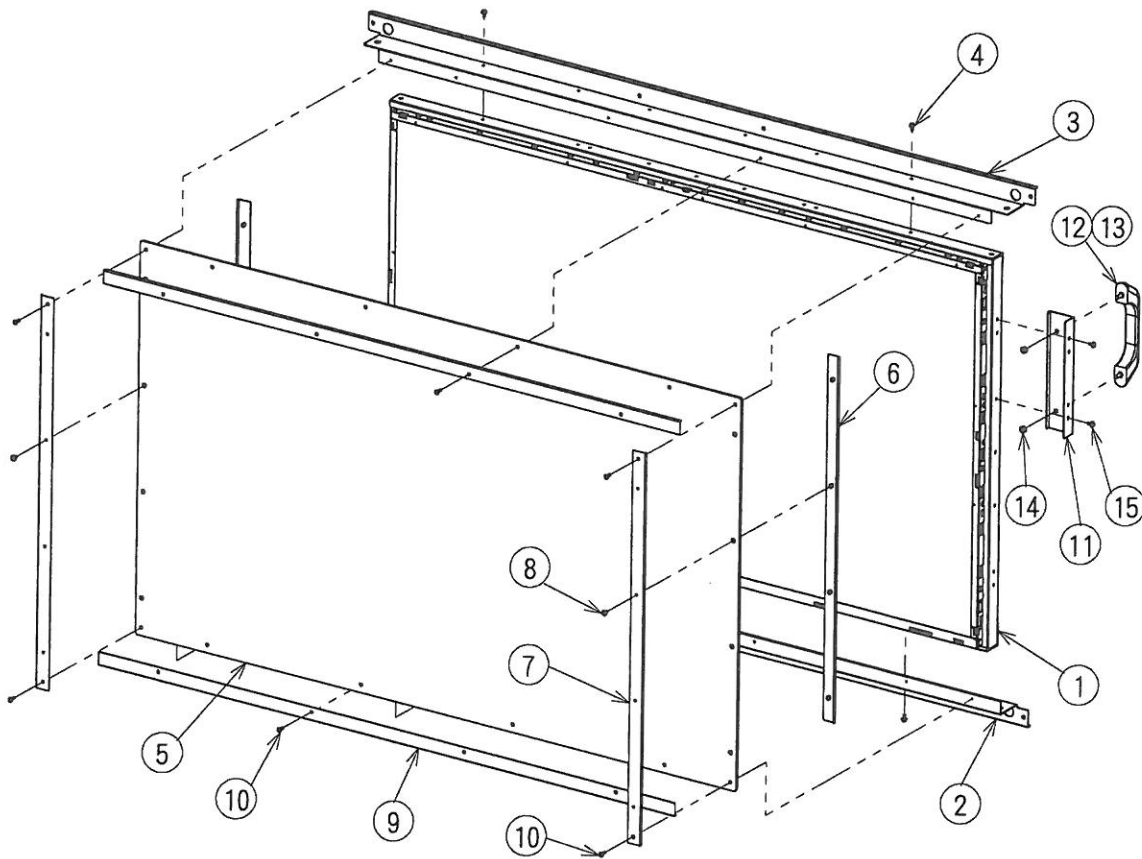


015 CLEANER MAIN BODY BOX ASSY (LMAAE00017*) LIST

No.	PART NAME	PART NUMBER	PCS	REMARKS
1	CLEANER MAIN BODY BASE	LMADE01001*	1	
2	CLEANER MAIN BODY GUARD	LMADA01005*	1	
3	CLEANER MAIN BODY ST A	LMABA01017*	2	
4	CLEANER MAIN BODY ST B	LMABA01018*	1	
5	CLEANER MAIN BODY ST C	LMABA01019*	1	
6	PAN HEAD SCREW (WITH PLAIN AND SPRING WASHER)	M4X25	8	TRIVALENT CHROMATE (WHITE)
7	CLEANER BODY LED BRACKET	LMABA01014*	1	
8	LED PCB	MTS-9-HH-015CAP-1	1	
9	PAN HEAD SCREW (WITH PLAIN AND SPRING WASHER)	M3X16	2	TRIVALENT CHROMATE (WHITE)
10	PAN HEAD SCREW (WITH PLAIN AND SPRING WASHER)	M4X25	2	TRIVALENT CHROMATE (WHITE)

10 - Parts List

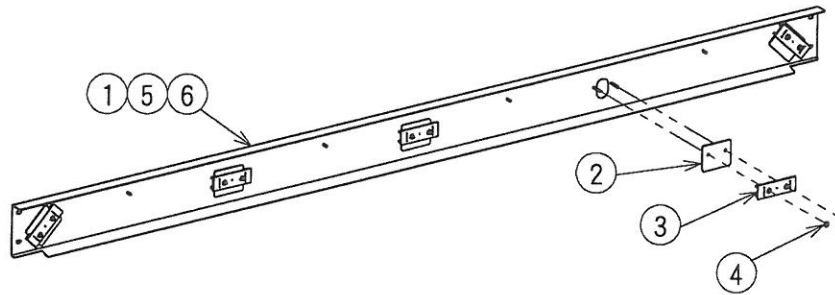
016 LCD UNIT ASSY (LMAAE00018*)



016 LCD UNIT ASSY (LMAAE00018*) LIST

No.	PART NAME	PART NUMBER	PCS	REMARKS
1	LCD UNIT	MT55W-887C3	1	
2	LCD UNDER FRAME	LMABA01041*	1	
3	LCD TOP FRAME	LMABA01039*	1	
4	PAN HEAD SCREW (WITH PLAIN AND SPRING WASHER)	M4X10	12	TRIVALENT CHROMATE (WHITE)
5	LCD FRONT COVER	LMACA01006*	1	
6	LCD FRONT COVER STAY SB	LMABA01031*	2	
7	LCD FRONT COVER STAY SF	LMABA01032*	2	
8	PAN HEAD SCREW (WITH PLAIN AND SPRING WASHER)	M4X10	8	TRIVALENT CHROMATE (WHITE)
9	LCD FRONT COVER STAY HL	LMABA01030*	2	
10	TRUSS HEAD SCREW	M4X12	12	TRIVALENT CHROMATE (BLACK)
11	HANDLE BRACKET	LMABA01026*	2	
12	RESIN HANDLE	THA-454	2	
13	PAN HEAD SCREW (WITH SPRING WASHER)	M6X16	4	TRIVALENT CHROMATE (WHITE)
14	LOCK NUT (TYPE U)	M6	4	TRIVALENT CHROMATE (WHITE)
15	PAN HEAD SCREW (WITH PLAIN AND SPRING WASHER)	M4X10	6	TRIVALENT CHROMATE (WHITE)

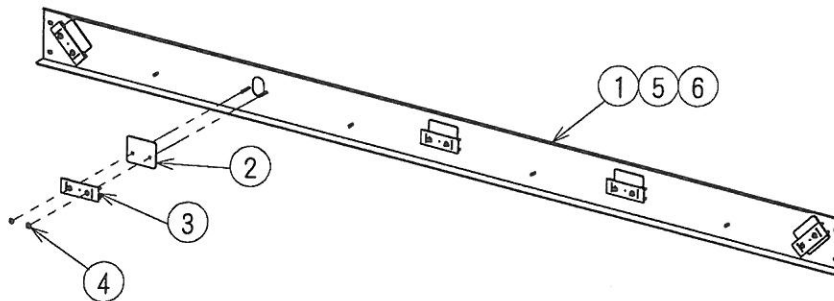
017 LED BD UNIT BASE T ASSY (LMAAE00019*)



017 LED BD UNIT BASE T ASSY (LMAAE00019*) LIST

No.	PART NAME	PART NUMBER	PCS	REMARKS
1	LED BD UNIT BASE	LMABA01042*	1	
2	LED FILTER PLATE	LMACA01007*	5	
3	2D GUN SENSOR SYSTEM LED BD	LED BD HFNC-1	5	
4	HEXAGON NUT WITH FLANGE	M3	10	TRIVALENT CHROMATE (WHITE)
5	CABLE CLAMP	CS-6	4	
6	HEXAGON NUT WITH FLANGE	M3	4	TRIVALENT CHROMATE (WHITE)

018 LED BD UNIT BASE U ASSY (LMAAE00020*)

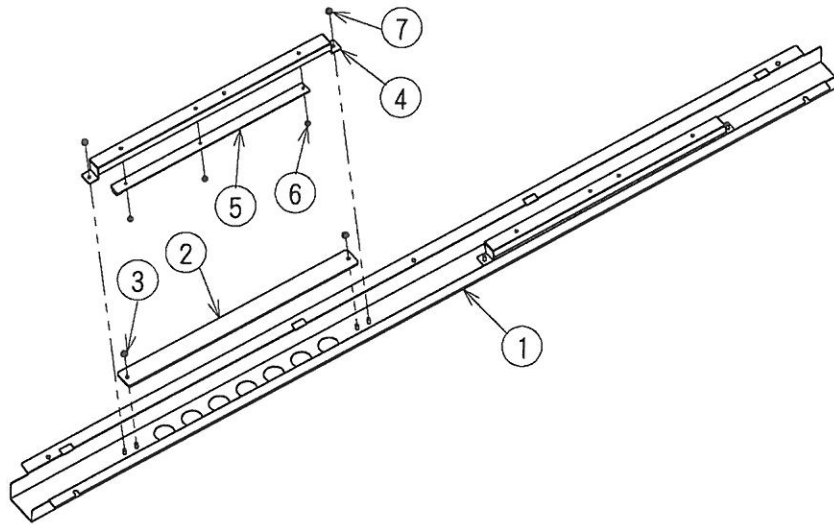


018 LED BD UNIT BASE U ASSY (LMAAE00020*) LIST

No.	PART NAME	PART NUMBER	PCS	REMARKS
1	LED BD UNIT BASE	LMABA01042*	1	
2	LED FILTER PLATE	LMACA01007*	5	
3	2D GUN SENSOR SYSTEM LED BD	LED BD HFNC-1	5	
4	HEXAGON NUT WITH FLANGE	M3	10	TRIVALENT CHROMATE (WHITE)
5	CABLE CLAMP	CS-6	4	
6	HEXAGON NUT WITH FLANGE	M3	4	TRIVALENT CHROMATE (WHITE)

10 - Parts List

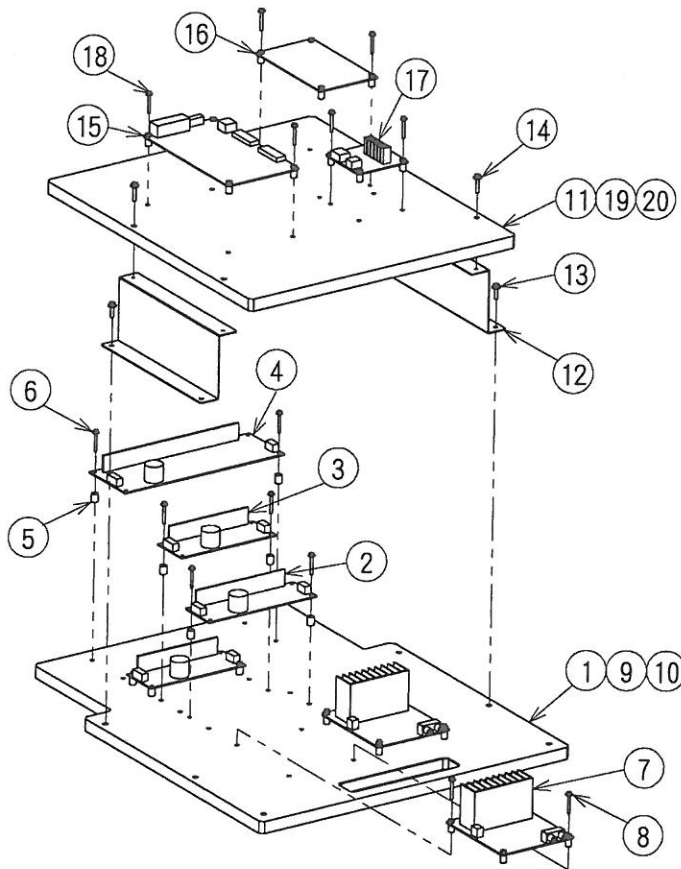
019 IN TOP LED ASSY (LMAAE00021*)



019 IN TOP LED ASSY (LMAAE00021*) LIST

No.	PART NAME	PART NUMBER	PCS	REMARKS
1	IN TOP LED BASE	LMABA01027*	1	
2	IN TOP LED COVER	LMACA01005*	2	
3	HEXAGON NUT WITH FLANGE	M4	4	TRIVALENT CHROMATE (WHITE)
4	IN TOP LED BKT	LMABA01028*	2	
5	FIELD LED PCB	MTS-9-HH-043	2	
6	PAN HEAD SCREW (WITH PLAIN AND SPRING WASHER)	M3X8	6	TRIVALENT CHROMATE (WHITE)
7	HEXAGON NUT WITH FLANGE	M4	4	TRIVALENT CHROMATE (WHITE)

020 PCB UNIT ASSY (LMAAE00022*)

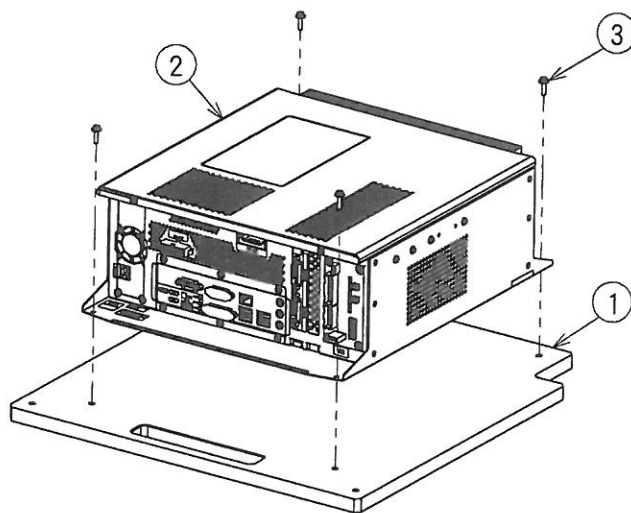


020 PCB UNIT ASSY (LMAAE00022*) LIST

No.	PART NAME	PART NUMBER	PCS	REMARKS
1	PCB BASE	LMADA01007*	1	
2	POWER SUPPLY	VS75E-5/5.2	1	
3	POWER SUPPLY	VS50E-12	2	
4	POWER SUPPLY	VS150P-24	1	
5	RESIN SPACER	PS-412	16	
6	PAN HEAD SCREW (WITH PLAIN AND SPRING WASHER)	M3X30	16	TRIVALENT CHROMATE (WHITE)
7	ASSY AMT-04035 AMP(4)	D#RA50018X*	2	
8	PAN HEAD SCREW (WITH PLAIN AND SPRING WASHER)	M3X30	8	TRIVALENT CHROMATE (WHITE)
9	UL CLAMP	UL-18G	4	
10	WOOD SCREW	3. 1X16	4	TRIVALENT CHROMATE (WHITE)
11	PCB BASE 2	LMADA01008*	1	
12	PCB BASE BRACKET	LMABA01045*	2	
13	PAN HEAD SCREW (WITH PLAIN AND SPRING WASHER)	M4X16	4	TRIVALENT CHROMATE (WHITE)
14	PAN HEAD SCREW (WITH PLAIN AND SPRING WASHER)	M4X20	4	TRIVALENT CHROMATE (WHITE)
15	ASSY AMO-10028 CIRCLINK(2)	D#RA50029X*	1	
16	ASSY AMO-14063 GUN DRIVE(1)	D#RA50051X*	1	
17	FIELD DRIVE PCB	MTS-9-HH-044	1	
18	PAN HEAD SCREW (WITH PLAIN AND SPRING WASHER)	M3X30	12	TRIVALENT CHROMATE (WHITE)
19	UL CLAMP	UL-18G	1	
20	WOOD SCREW	3. 1X16	1	TRIVALENT CHROMATE (WHITE)

10 - Parts List

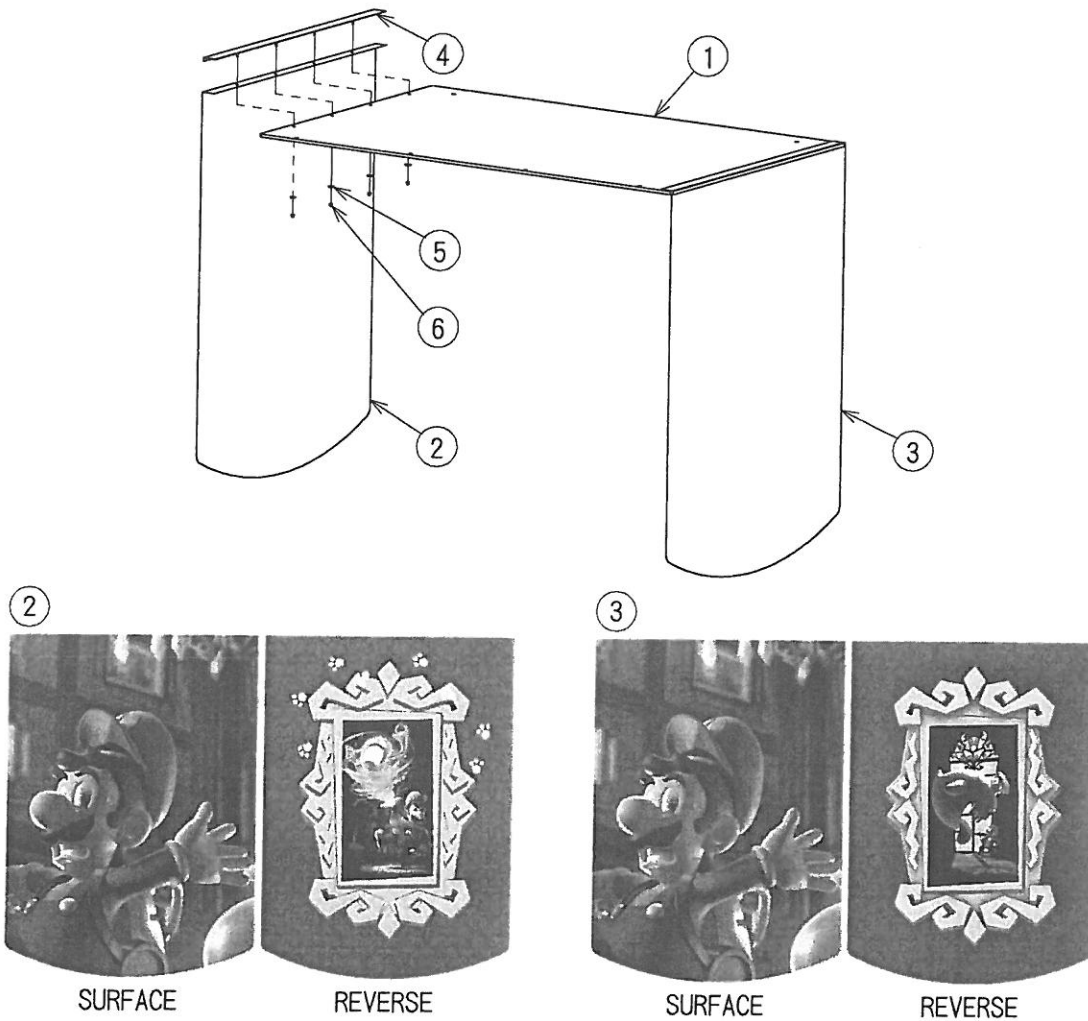
021 PC UNIT ASSY (LMAAE00023*)



021 PC UNIT ASSY (LMAAE00023*) LIST

No.	PART NAME	PART NUMBER	PCS	REMARKS
1	PC BASE	LMADA01006*	1	
2	Nu1.1	848-0002D	1	
3	PAN HEAD SCREW (WITH PLAIN AND SPRING WASHER)	M4X16	4	TRIVALENT CHROMATE (WHITE)

022 ROOF CURTAIN ASSY (LMAAE00005*)

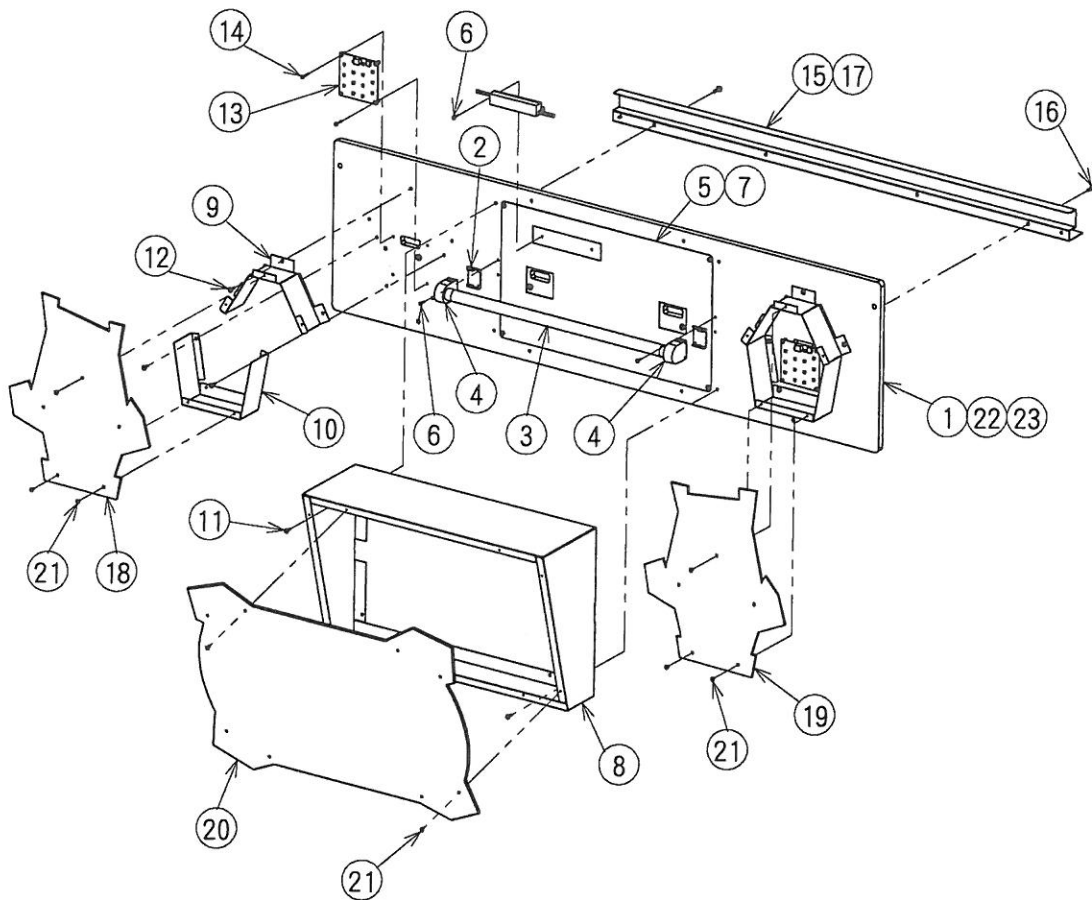


022 ROOF CURTAIN ASSY (LMAAE00005*) LIST

No.	PART NAME	PART NUMBER	PCS	REMARKS
1	ROOF TOP WOOD	LMADA01014*	1	
2	LMA CURTAIN L	LMADN15001*	1	DESIGN PARTS
3	LMA CURTAIN R	LMADN15002*	1	DESIGN PARTS
4	SIDE CURTAIN STOPPER	LMABA01062*	2	
5	PLAIN WASHER (SPECIAL)	$\phi 4.4 \times \phi 16 \times t1.6$	8	TRIVALENT CHROMATE (BLACK)
6	DOMED CAP NUT	M4	8	TRIVALENT CHROMATE (BLACK)

10 - Parts List

023 BACK DESIGN UNIT ASSY (LMAAE00006*)



10 - Parts List

023 BACK DESIGN UNIT ASSY (LMAAE00006*) LIST

No.	PART NAME	PART NUMBER	PCS	REMARKS
1	BACK DESIGN BOARD	LMADA01004*	1	
2	LED SOCKET BRACKET	LMABA01043*	2	
3	LED LIGHT	TL-LINE20-CC-SS50GX	1	POWER SUPPLY INCLUDED
4	GX SOCKET HARNESS	CAP0011	1	
5	TITLE REFLECTOR	LMACA01008*	1	
6	PAN HEAD SCREW (WITH PLAIN AND SPRING WASHER)	M3X16	6	TRIVALENT CHROMATE (WHITE)
7	PAN HEAD SCREW (WITH PLAIN AND SPRING WASHER)	M4X16	4	TRIVALENT CHROMATE (WHITE)
8	TITLE PANEL BRACKET	LMABA01073*	1	
9	BACK DESIGN COVER BKT T	LMABA01005*	2	
10	BACK DESIGN COVER BKT U	LMABA01006*	2	
11	PAN HEAD SCREW (WITH PLAIN AND SPRING WASHER)	M4X16	16	TRIVALENT CHROMATE (WHITE)
12	PAN HEAD SCREW (WITH PLAIN AND SPRING WASHER)	M4X16	6	TRIVALENT CHROMATE (BLACK)
13	LED PCB	MTS-9-HH-140	2	
14	PAN HEAD SCREW (WITH PLAIN AND SPRING WASHER)	M3X25	8	TRIVALENT CHROMATE (WHITE)
15	BACK DESIGN BOARD STAY	LMABA01004*	1	
16	PAN HEAD SCREW (WITH PLAIN AND SPRING WASHER)	M5X20	4	TRIVALENT CHROMATE (WHITE)
17	PAN HEAD SCREW (WITH PLAIN AND SPRING WASHER)	M4X10	1	TRIVALENT CHROMATE (WHITE)
18	LMA BL PLATE L	LMACA15002*	1	DESIGN PARTS
19	LMA BL PLATE R	LMACA15003*	1	DESIGN PARTS
20	LMA BL PLATE	LMACA15001*	1	DESIGN PARTS
21	TRUSS HEAD SCREW	M4X12	18	TRIVALENT CHROMATE (BLACK)
22	UL CLAMP	UL-18G	1	
23	WOOD SCREW	3. 1X16	1	TRIVALENT CHROMATE (WHITE)